

VORTAC CTY 112.0 Chan 57	APP CRS 304°	Rwy Idg 5001 TDZE 42 Apt Elev 42
--	------------------------	---

VOR RWY 31

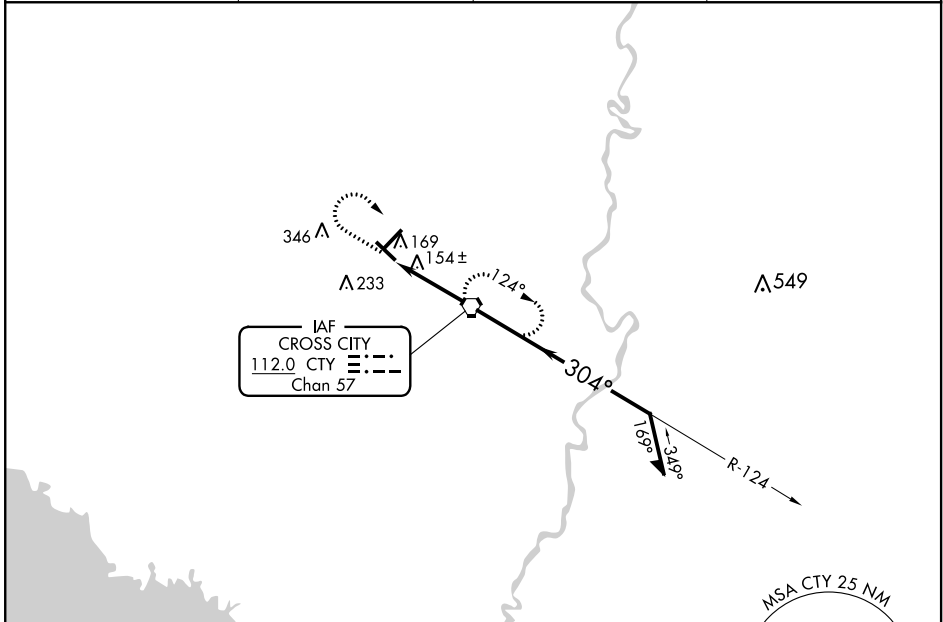
CROSS CITY (CTY)

▼ Helicopter visibility reduction below 1 SM NA. Use Williston altimeter setting; when not received, use Gainesville altimeter setting and increase all MDA 40 feet and increase Circling Cat C visibility ¼ mile. Rwy 31 Straight-in and Circling and Circling to Rwy 4/13 NA at night.

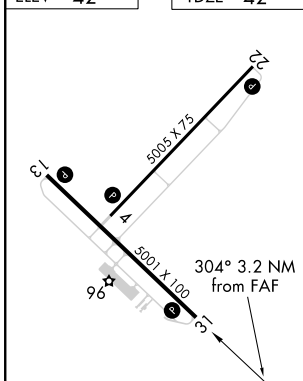
▲ NA

MISSED APPROACH: Climb to 1000 then climbing right turn to 2000 direct CTY VORTAC and hold.

AWOS-3PT 120.775	X60 AWOS-3T 118.425	JACKSONVILLE CENTER 127.8 352.0	UNICOM 122.8 (CTAF) 0
----------------------------	-------------------------------	---	---------------------------------



ELEV 42	TDZE 42
----------------	----------------



1000	2000	CTY	CTY VORTAC	Remain within 10 NM
↑	↷	⬡		
VGSJ and descent angles not coincident (VGSJ Angle 3.00/TCH 36).				

MIRL Rws 4-22 and 13-31 **0**
REIL Rws 13 and 31 **0**

FAF to MAP 3.2 NM

Knots	60	90	120	150	180
Min:Sec	3:12	2:08	1:36	1:17	1:04

CATEGORY	A	B	C	D
S-31	560-1 518 (600-1)		560-1½ 518 (600-1½)	560-1¾ 518 (600-1¾)
CIRCLING	620-1 578 (600-1)		620-1½ 578 (600-1½)	740-2¼ 698 (700-2¼)

SE-3, 04 NOV 2021 to 02 DEC 2021

SE-3, 04 NOV 2021 to 02 DEC 2021