


LOC I-CXY <b>109.1</b>	APP CRS <b>082°</b>	Rwy Idg TDZE Apt Elev	<b>5000</b> <b>342</b> <b>347</b>
---------------------------	------------------------	-----------------------------	---

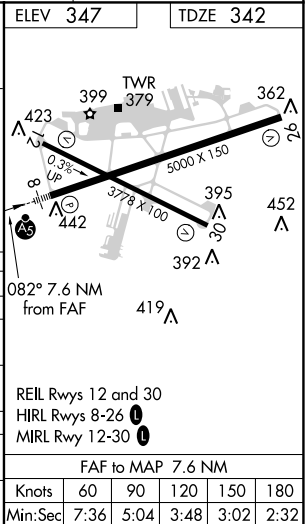
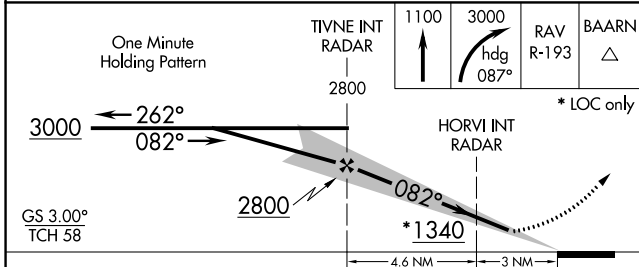
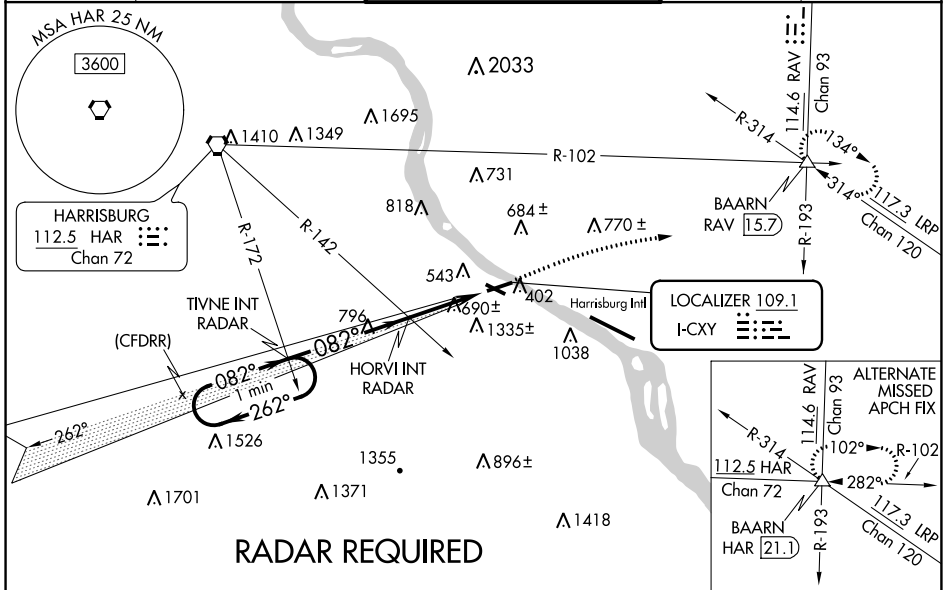
# ILS or LOC RWY 8

CAPITAL CITY (CXY)

**⚠** When local altimeter setting not received, use Harrisburg Intl altimeter setting. For inop MALS, increase S-ILS-8 all Cats visibility to 1¼ mile and S-LOC-8 Cat A and HORVI FIX minimums Cat A and B visibility to 1 mile. Night landing Rwy 12, 30 NA. Helicopter visibility reduction below ¾ SM NA.

**MALS**  MISSED APPROACH: Climb to 1100 then climbing right turn to 3000 on heading 087° and on RAV VORTAC R-193 to BAARN INT/RAV 15.7 DME and hold.

ATIS <b>134.95</b>	HARRISBURG APP CON <b>124.1 273.525</b>	CAPITAL CITY TOWER * <b>119.5 (CTAF) 0 257.8</b>	GND CON <b>121.9</b>	UNICOM <b>122.95</b>
-----------------------	--	---	-------------------------	-------------------------



CATEGORY	A	B	C	D
S-ILS 8		834-1¼	492 (500-1¼)	
S-LOC 8	1340-1	1005 (1000-1)	1340-2½	1005 (1000-2½)
<b>C</b> CIRCLING	1340-1¼ 993 (1000-1¼)	1700-1½ 1353 (1400-1½)	1700-3	1353 (1400-3)
HORVI FIX MINIMUMS				
S-LOC 8	940-1	605 (600-1)	940-1¾	605 (600-1¾)
<b>C</b> CIRCLING	1200-1¼ 853 (900-1¼)	1700-1½ 1353 (1400-1½)	1700-3	1353 (1400-3)

NE-4, 04 NOV 2021 to 02 DEC 2021

NE-4, 04 NOV 2021 to 02 DEC 2021