

# AARPS ONE DEPARTURE (RNAV)

ATIS  
125.9  
CLNC DEL  
119.2  
GND CON  
120.025  
OPA LOCKA TOWER ★  
134.675 (CTAF)  
MIAMI DEP CON  
119.45 290.325

**TOP ALTITUDE:  
ASSIGNED BY ATC**

### TAKEOFF MINIMUMS

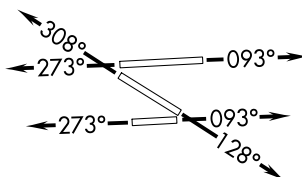
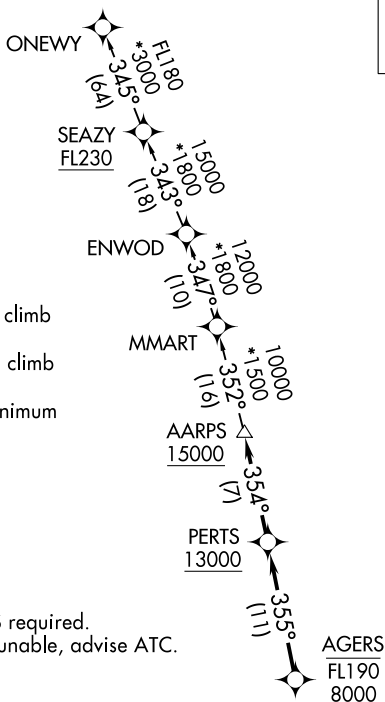
Rwy 9L: Standard with minimum climb of 500' per NM to 1000.

Rwy 9R: Standard with minimum climb of 500' per NM to 700.

Rwys 12, 27R: Standard with minimum climb of 500' per NM to 600.

Rwys 27L, 30: Standard.

- NOTE: RNAV 1.
- NOTE: RADAR required.
- NOTE: Jet aircraft only.
- NOTE: DME/DME/IRU or GPS required.
- NOTE: Accelerate to 250K, if unable, advise ATC.



NOTE: Chart not to scale.

### DEPARTURE ROUTE DESCRIPTION

**TAKEOFF RUNWAYS 9L/R:** Climb on heading 093° or as assigned for RADAR vectors to cross AGERS between 8000 and FL190. Thence. . .

**TAKEOFF RUNWAY 12:** Climb on heading 128° or as assigned for RADAR vectors to cross AGERS between 8000 and FL190. Thence. . .

**TAKEOFF RUNWAYS 27L/R:** Climb on heading 273° or as assigned for RADAR vectors to cross AGERS between 8000 and FL190. Thence. . .

**TAKEOFF RUNWAY 30:** Climb on heading 308° or as assigned for RADAR vectors to cross AGERS between 8000 and FL190. Thence. . .

. . .on track 355° to cross PERTS at or above 13000, then on track 354° to cross AARPS at or above 15000. Then on transition. Maintain ATC assigned altitude, expect clearance to filed altitude within 10 minutes after departure.

ONEWY TRANSITION (AARPS1.ONEWY)

# AARPS ONE DEPARTURE (RNAV)