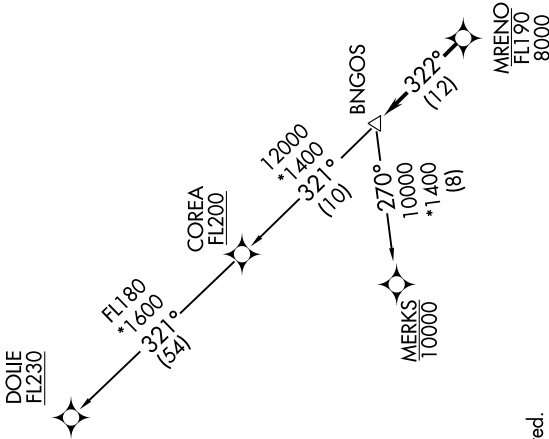


# BNGOS ONE DEPARTURE (RNAV)

SE-3, 04 NOV 2021 to 02 DEC 2021

## TOP ALTITUDE: ASSIGNED BY ATC

ATIS  
125.9  
CLINC DEL  
119.2  
GND CON  
120.025  
OPA LOCKA TOWER \*  
134.675 (CTAF)  
MIAMI DEP CON  
119.45 290.325



MRENO  
FL190  
8000

- NOTE: RNAV 1.
- NOTE: RADAR required.
- NOTE: Jet aircraft only.
- NOTE: DME/DME/IRU or GPS required
- NOTE: Accelerate to 250K, if unable, advise ATC.
- NOTE: MERKS TRANSITION ATC assigned only except aircraft landing: MKY, RSW, APF and FMY.

### TAKEOFF MINIMUMS

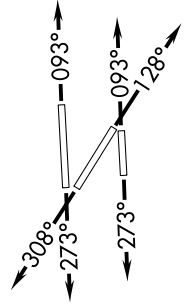
- Rwy 9L: Standard with minimum climb of 500' per NM to 1000.
- Rwy 9R: Standard with minimum climb of 500' per NM to 700.
- Rwys 12, 27R: Standard with minimum climb of 500' per NM to 600.
- Rwys 27L, 30: Standard.

## DEPARTURE ROUTE DESCRIPTION

TAKEOFF RUNWAYS 9L/R: Climb on heading 093° or as assigned for RADAR vectors to cross MRENO between 8000 and FL190, thence. . . . TAKEOFF RUNWAY 12: Climb on heading 128° or as assigned for RADAR vectors to cross MRENO between 8000 and FL190, thence. . . . TAKEOFF RUNWAYS 27L/R: Climb on heading 273° or as assigned for RADAR vectors to cross MRENO between 8000 and FL190, thence. . . . TAKEOFF RUNWAY 30: Climb on heading 308° or as assigned for RADAR vectors to cross MRENO between 8000 and FL190, thence. . . .

. . . . on track 322° to BNGOS, then on TRANSITION. Maintain ATC assigned altitude, expect clearance to filed altitude within 10 minutes after departure.

COREA TRANSITION (BNGOS1.COREA)  
DOLIE TRANSITION (BNGOS1.DOLIE)  
MERKS TRANSITION (BNGOS1.MERKS)



NOTE: Chart not to scale.