

(FOLZZ1.FOLZZ) 21224

AL-256 (FAA)

MIAMI-OPA LOCKA EXEC (OPF)
MIAMI, FLORIDA

FOLZZ ONE DEPARTURE (RNAV)

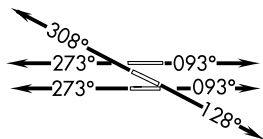
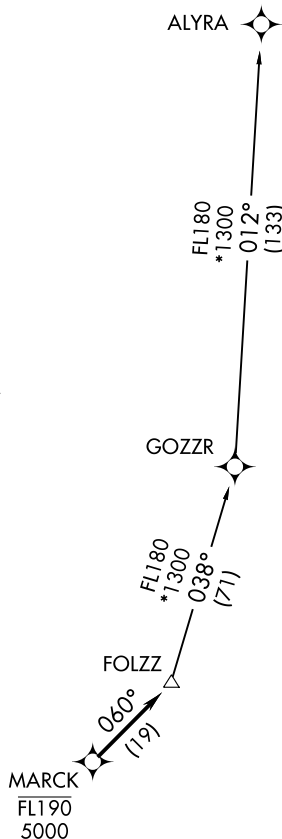
**TOP ALTITUDE:
ASSIGNED BY ATC**

ATIS
125.9
CLNC DEL
119.2
GND CON
120.025
OPA LOCKA TOWER *
134.675 (CTAF)
MIAMI DEP CON
119.45 290.325

TAKEOFF MINIMUMS:

Rwy 9L: Standard with minimum climb of 500' per NM to 1000.
Rwy 9R: Standard with minimum climb of 500' per NM to 700.
Rwy 12, 27R: Standard with minimum climb of 500' per NM to 600.
Rwy 27L, 30: Standard.

NOTE: RNAV 1.
NOTE: RADAR required.
NOTE: Jet aircraft only.
NOTE: DME/DME/IRU or GPS required.
NOTE: Accelerate to 250K, if unable, advise ATC.



NOTE: Chart not to scale.

DEPARTURE ROUTE DESCRIPTION

TAKEOFF RUNWAY 9L/R: Climb on heading 093° or as assigned for RADAR vectors to cross MARCK between 5000 and FL190, thence. . . .
TAKEOFF RUNWAY 12: Climb on heading 128° or as assigned for RADAR vectors to cross MARCK between 5000 and FL190, thence. . . .
TAKEOFF RUNWAY 27L/R: Climb on heading 273° or as assigned for RADAR vectors to cross MARCK between 5000 and FL190, thence. . . .
TAKEOFF RUNWAY 30: Climb on heading 308° or as assigned for RADAR vectors to cross MARCK between 5000 and FL190, thence. . . .

. . . . on track 060° to FOLZZ, then on transition. Maintain ATC assigned altitude, expect clearance to filed altitude within 10 minutes after departure.

ALYRA TRANSITION (FOLZZ1.ALYRA)

FOLZZ ONE DEPARTURE (RNAV)
(FOLZZ1.FOLZZ) 12AUG21

MIAMI, FLORIDA
MIAMI-OPA LOCKA EXEC (OPF)

SE-3, 04 NOV 2021 to 02 DEC 2021

SE-3, 04 NOV 2021 to 02 DEC 2021