

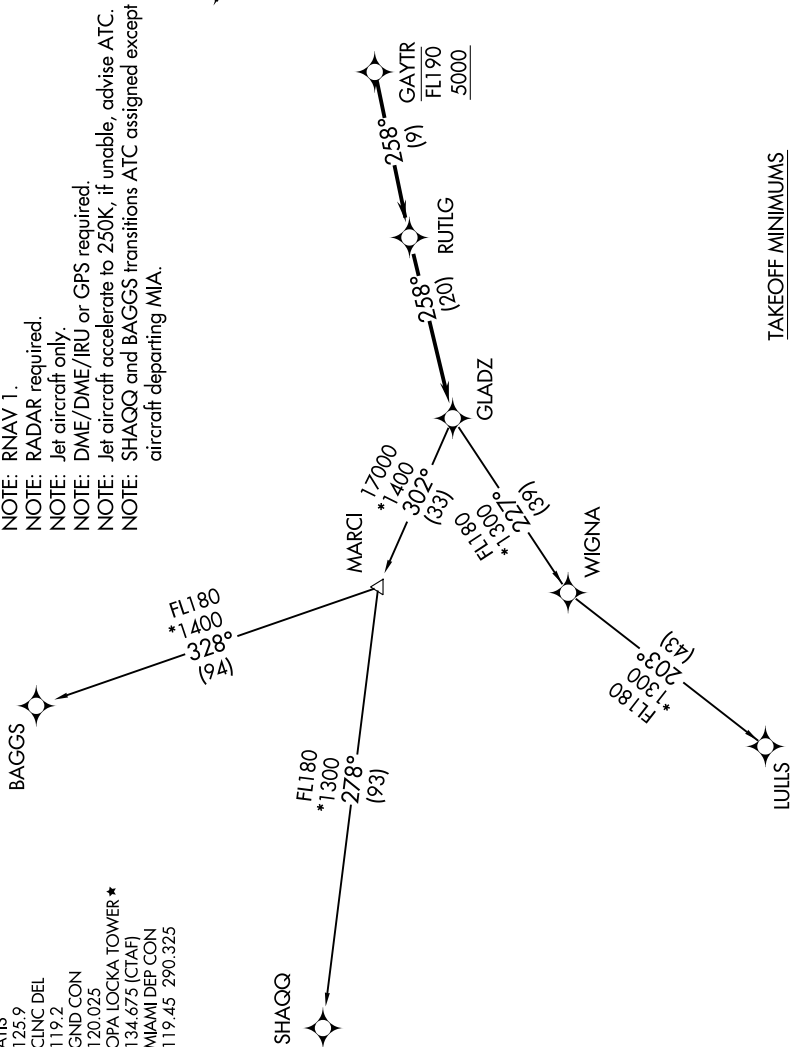
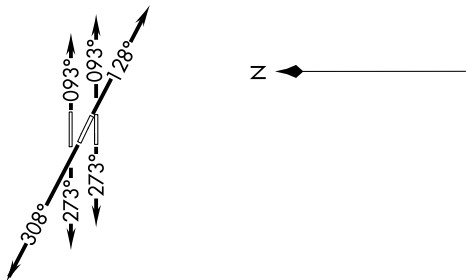
GLADZ ONE DEPARTURE (RNAV)

SE-3, 04 NOV 2021 to 02 DEC 2021

**TOP ALTITUDE:
ASSIGNED BY ATC**

- NOTE: RNAV 1.
- NOTE: RADAR required.
- NOTE: Jet aircraft only.
- NOTE: DME/DME/IRU or GPS required.
- NOTE: Jet aircraft accelerate to 250K, if unable, advise ATC.
- NOTE: SHAGQ and BAGGS transitions ATC assigned except aircraft departing MIA.

- ATIS 125.9
- CINC DEL 119.2
- GND CON 120.025
- OPA LOCKA TOWER* 134.675 (CTAF)
- MIAMI DEP CON 119.45 290.325



TAKEOFF MINIMUMS

- Rwys 27L, 30: Standard.
- Rwy 9L: Standard with minimum climb of 500' per NM to 1000.
- Rwy 9R: Standard with minimum climb of 500' per NM to 700.
- Rwys 12, 27R: Standard with minimum climb of 500' per NM to 600.

(NARRATIVE ON FOLLOWING PAGE)

NOTE: Chart not to scale.

SE-3, 04 NOV 2021 to 02 DEC 2021