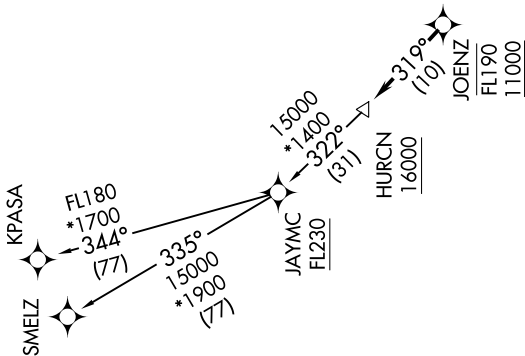


# HURCN ONE DEPARTURE (RNAV)

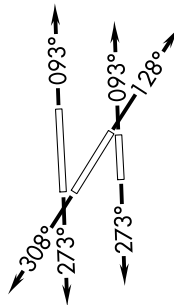
**TOP ALTITUDE:  
ASSIGNED BY ATC**

ATIS 125.9  
 CLNC DEL 119.2  
 GND CON 120.025  
 OPA LOCKA TOWER ★ 134.675 (CTAF)  
 MIAMI DEP CON 119.45 290.325

**TAKEOFF MINIMUMS**  
 Rwy 9L: Standard with minimum climb of 500' per NM to 1000.  
 Rwy 9R: Standard with minimum climb of 500' per NM to 700.  
 Rwys 12, 27R: Standard with minimum climb of 500' per NM to 600.  
 Rwys 27L, 30: Standard.



NOTE: RNAV 1.  
 NOTE: RADAR required.  
 NOTE: Jet aircraft only.  
 NOTE: DME/DME/IRU or GPS required.  
 NOTE: Accelerate to 250K, if unable, advise ATC.



NOTE: Chart not to scale.

(NARRATIVE ON FOLLOWING PAGE)