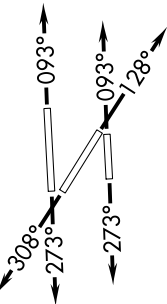


HUSIL ONE DEPARTURE (RNAV)

SE-3, 04 NOV 2021 to 02 DEC 2021

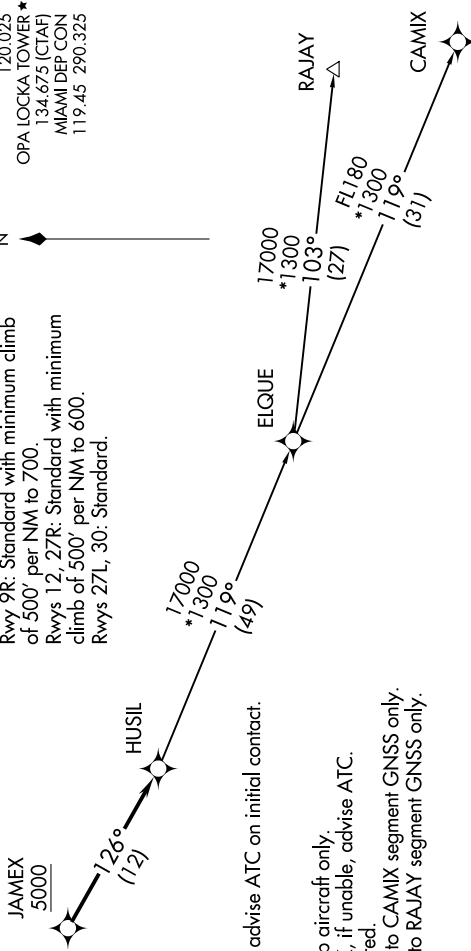
TOP ALTITUDE: ASSIGNED BY ATC



TAKEOFF MINIMUMS
 Rwy 9L: Standard with minimum climb of 500' per NM to 1000.
 Rwy 9R: Standard with minimum climb of 500' per NM to 700.
 Rwys 12, 27R: Standard with minimum climb of 500' per NM to 600.
 Rwys 27L, 30: Standard.



ATIS 125.9
 CLNC DEL 119.2
 GND CON 120.025
 OPA LOCKA TOWER * 134.675 (CTAF)
 MIAMI DEP CON 119.45 290.325



NOTE: If unable to accept climb rate, advise ATC on initial contact.
 NOTE: RNAV 1.
 NOTE: RADAR required.
 NOTE: KMAA, for Turboprop and Prop aircraft only.
 NOTE: Jet aircraft accelerate to 250K, if unable, advise ATC.
 NOTE: DME/DME/IRU or GPS required.
 NOTE: CAMIX TRANSITION, ELQUE to CAMIX segment GNSS only.
 NOTE: RAJAY TRANSITION, ELQUE to RAJAY segment GNSS only.

NOTE: Chart not to scale.

DEPARTURE ROUTE DESCRIPTION

TAKEOFF RUNWAYS 9L/R: Climb on heading 093° or as assigned for RADAR vectors to cross JAMEX at or above 5000. Thence...
TAKEOFF RUNWAY 12: Climb on heading 128° or as assigned for RADAR vectors to cross JAMEX at or above 5000. Thence...
TAKEOFF RUNWAYS 27L/R: Climb on heading 273° or as assigned for RADAR vectors to cross JAMEX at or above 5000. Thence...
TAKEOFF RUNWAY 30: Climb on heading 308° or as assigned for RADAR vectors to cross JAMEX at or above 5000. Thence...

... on track 126° to HUSIL. Then on assigned transition. Maintain ATC assigned altitude, expect clearance to filed altitude within 10 minutes after departure.

CAMIX TRANSITION (HUSIL1.CAMIX)
RAJAY TRANSITION (HUSIL1.RAJAY)

SE-3, 04 NOV 2021 to 02 DEC 2021