

LOC I-OPF 110.5	APP CRS 093°	Rwy Idg 8002 TDZE 8 Apt Elev 8
---------------------------	------------------------	---

ILS or LOC RWY 9L

MIAMI-OPA LOCKA EXEC (OPF)

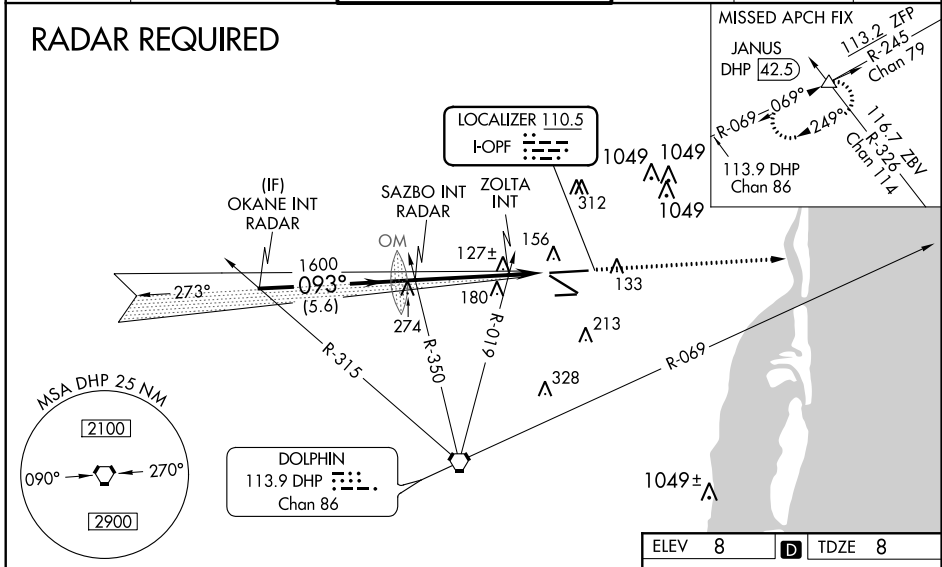
⚠ Inop table does not apply. Helicopter visibility reduction below 3/4 SM NA.
⚠ Caution: Lights on highway 0.7 NM north may be mistaken for runway.
 When local altimeter setting not received, use Miami Intl altimeter setting and increase all DA/MDA 20 feet. For inop MALSRL, increase S-LOC 9L Cats A and B visibility to 1 mile and Cats C and D visibility to 1 1/2 miles. ZOLTA Fix Minimums, for inop MALSRL, increase S-LOC 9L all Cats visibility to 1 mile. ZOLTA Fix Minimums, for inop MALSRL, when using Miami Intl altimeter setting, increase Cats A and B visibility to 1 mile and Cats C and D visibility to 1 1/2 miles. For inop MALSRL, when using Miami Intl altimeter setting, increase S-ILS 9L all Cats visibility to 3/4 mile.

MALSRL

 MISSED APPROACH: Climb to 2000 heading 093° and DHP VORTAC R-069 to JANUS INT/DHP 42.5 DME and hold.

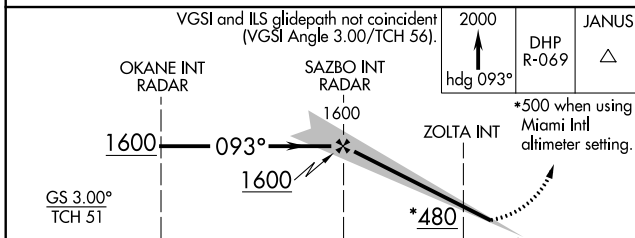
ATIS 125.9	MIAMI APP CON 128.6 306.975	OPA LOCKA TOWER ★ 134.675 (CTAF) 0	GND CON 120.025	CLNC DEL 119.2	GCO 119.45
----------------------	---------------------------------------	--	---------------------------	--------------------------	----------------------

RADAR REQUIRED

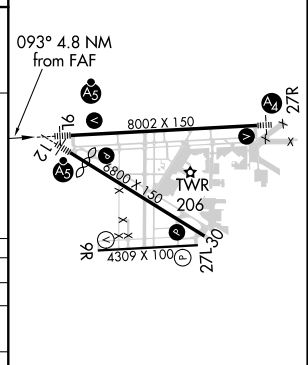


SE-3, 04 NOV 2021 to 02 DEC 2021

SE-3, 04 NOV 2021 to 02 DEC 2021



ELEV 8	D	TDZE 8
--------	---	--------



CATEGORY	A	B	C	D
S-ILS 9L		258-3/4	250 (300-3/4)	
S-LOC 9L	480-3/4	472 (500-3/4)	480-1	472 (500-1)
CIRCLING	540-1	532 (600-1)	540-1 1/2 532 (600-1 1/2)	560-2 552 (600-2)
ZOLTA FIX MINIMUMS				
S-LOC 9L		380-3/4	372 (400-3/4)	
CIRCLING	540-1	532 (600-1)	540-1 1/2 532 (600-1 1/2)	560-2 552 (600-2)

MRL Rwy 9R-27L
 HIRL Rwys 9L-27R and 12-30

FAF to MAP 4.8 NM

Knots	60	90	120	150	180
Min:Sec	4:48	3:12	2:24	1:55	1:36