

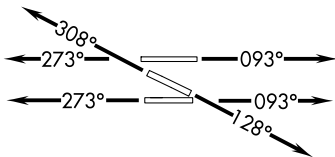
(MELLZ1 .MELLZ) 21224

AL-256 (FAA)

MIAMI-OPA LOCKA EXEC (OPF)

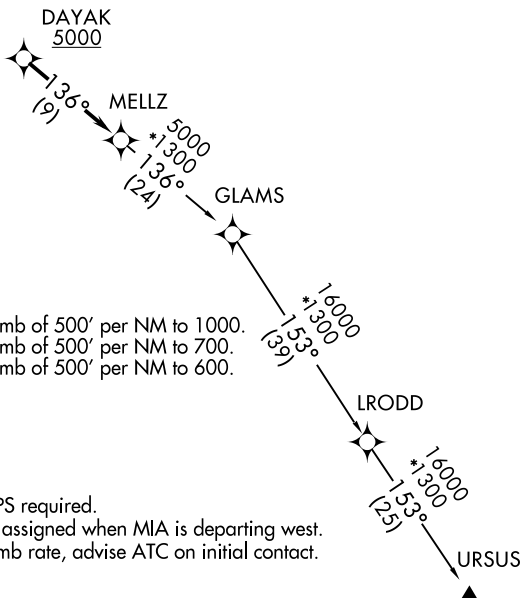
MIAMI, FLORIDA

# MELLZ ONE DEPARTURE (RNAV)



ATIS 125.9  
 CLNC DEL 119.2  
 GND CON 120.025  
 OPA LOCKA TOWER\* 134.675 (CTAF)  
 MIAMI DEP CON 119.45 290.325

**TOP ALTITUDE:  
ASSIGNED BY ATC**



### TAKEOFF MINIMUMS

Rwys 27L, 30: Standard.

Rwy 9L: Standard with minimum climb of 500' per NM to 1000.

Rwy 9R: Standard with minimum climb of 500' per NM to 700.

Rwys 12, 27R: Standard with minimum climb of 500' per NM to 600.

NOTE: RNAV 1.

NOTE: RADAR required..

NOTE: OPF, jet aircraft only.

NOTE: DME/DME/IRU or GPS required.

NOTE: OPF departures, ATC assigned when MIA is departing west.

NOTE: If unable to accept climb rate, advise ATC on initial contact.

NOTE: Chart not to scale.

### DEPARTURE ROUTE DESCRIPTION

**TAKEOFF RUNWAYS 9L/R:** Climb on heading 093° or as assigned for RADAR vectors to cross DAYAK at or above 5000 thence....

**TAKEOFF RUNWAY 12:** Climb on heading 128° or as assigned for RADAR vectors to cross DAYAK at or above 5000 thence....

**TAKEOFF RUNWAYS 27L/R:** Climb on heading 273° or as assigned for RADAR vectors to cross DAYAK at or above 5000 thence....

**TAKEOFF RUNWAY 30:** Climb on heading 308° or as assigned for RADAR vectors to cross DAYAK at or above 5000 thence....

...on track 136° to MELLZ, then on assigned transition. Maintain ATC assigned altitude, expect clearance to filed altitude within 10 minutes after departure.

GLAMS TRANSITION (MELLZ1 .GLAMS)

URSUS TRANSITION (MELLZ1 .URSUS)

MELLZ ONE DEPARTURE (RNAV)

(MELLZ1 .MELLZ) 12AUG21

MIAMI, FLORIDA

MIAMI-OPA LOCKA EXEC (OPF)

SE-3, 04 NOV 2021 to 02 DEC 2021