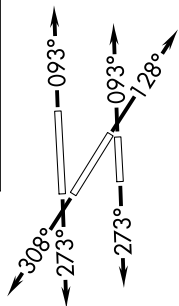


# MHITO ONE DEPARTURE (RNAV)

**TOP ALTITUDE:  
ASSIGNED BY ATC**



### TAKEOFF MINIMUMS

Rwys 27L, 30: Standard.

Rwy 9L: Standard with minimum climb of 500' per NM to 1000.

Rwy 9R: Standard with minimum climb of 500' per NM to 700.

Rwys 12, 27R: Standard with minimum climb of 500' per NM to 600.

- ATIS 125.9
- CLNC DEL 119.2
- GND CON 120.025
- OPA LOCKA TOWER ★ 134.675 (CTAF)
- MIAMI DEP CON 119.45 290.325

NOTE: RNAV 1.

NOTE: RADAR required.

NOTE: Jet aircraft only.

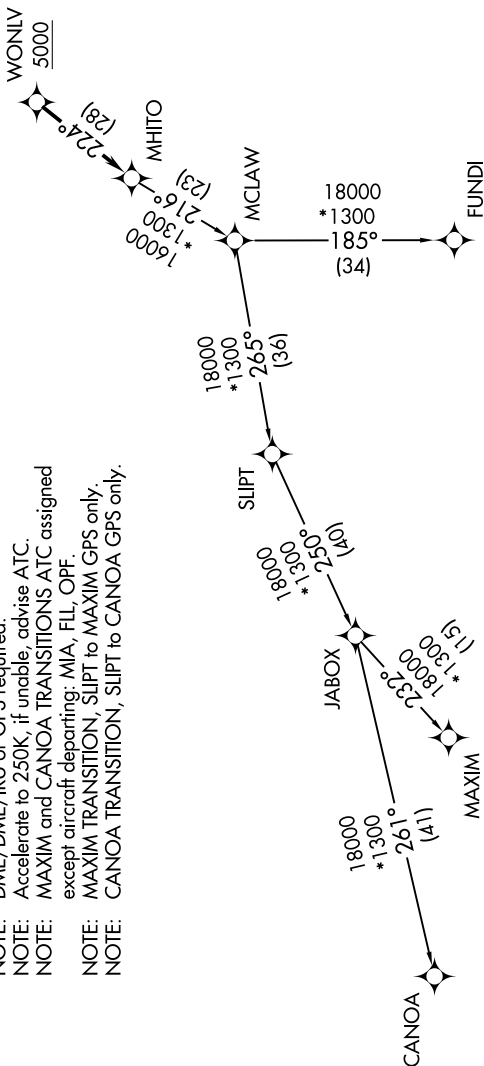
NOTE: DME/DME/IRU or GPS required.

NOTE: Accelerate to 250K if unable, advise ATC.

NOTE: MAXIM and CANOA TRANSITIONS ATC assigned except aircraft departing: MIA, FL, OPF.

NOTE: MAXIM TRANSITION, SLIPT to MAXIM GPS only.

NOTE: CANOA TRANSITION, SLIPT to CANOA GPS only.



(NARRATIVE ON FOLLOWING PAGE)

NOTE: Chart not to scale.

# MHITO ONE DEPARTURE (RNAV)