


WAAS CH 53422 W09A	APP CRS 093°	Rwy Idg 8002 TDZE 8 Apt Elev 8
--	------------------------	---

RNAV (GPS) RWY 9L

MIAMI-OPA LOCKA EXEC (OPF)

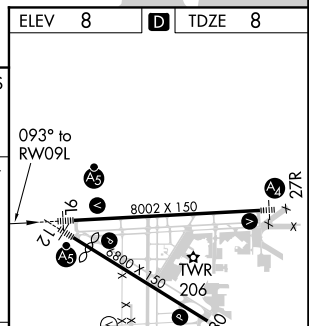
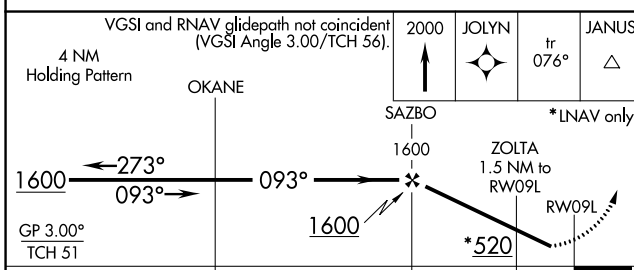
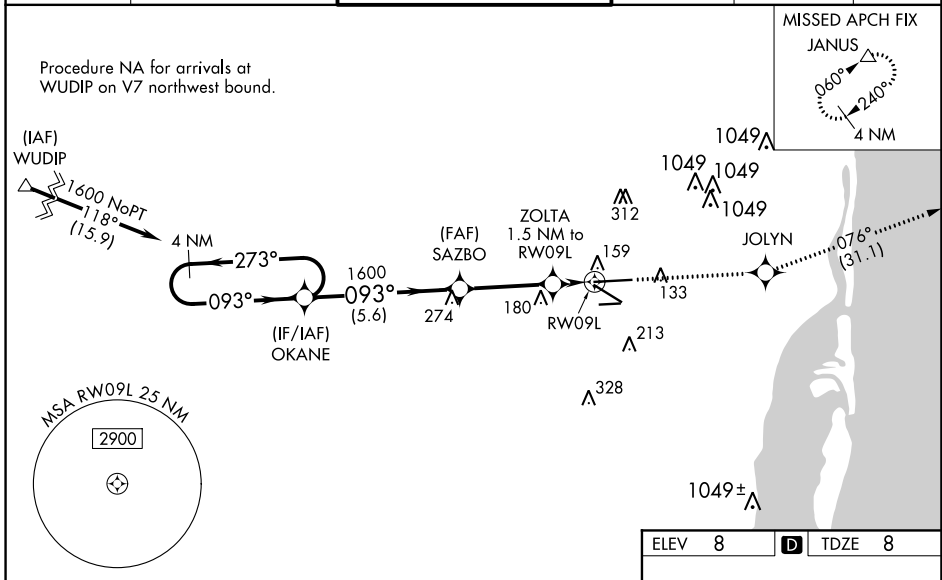
⚠ Baro-VNAV NA when using Miami Intl altimeter setting. For uncompensated Baro-VNAV systems, LNAV/VNAV NA below -1.5°C (5°F) or above 43°C (109°F). DME/DME RNP-0.3 NA. Helicopter visibility reduction below ¾ SM NA. When local altimeter setting not received, use Miami Intl altimeter setting and increase all DA/MDA 20 feet. For inop MALSR, increase LNAV/VNAV all Cats visibility to 1 mile, LNAV Cats A and B visibility to 1 mile and Cats C and D visibility to 1½ miles. For inop MALSR, when using Miami Intl altimeter setting, increase LPV all Cats visibility to ¾ mile, LNAV/VNAV all Cats visibility to 1½ miles and LNAV Cats A and B visibility to 1 mile. Inop table does not apply to LPV all Cats. Caution: Lights on highway 0.7 NM north may be mistaken for runway.

MALSR



MISSED APPROACH:
Climb to 2000 direct JOLYN and on track 076° to JANUS and hold.

ATIS 125.9	MIAMI APP CON 128.6 306.975	OPA LOCKA TOWER * 134.675 (CTAF) 0	GND CON 120.025	CLNC DEL 119.2	GCO 119.45
----------------------	---------------------------------------	--	---------------------------	--------------------------	----------------------



CATEGORY	A	B	C	D
LPV DA		258-¾	250 (300-¾)	
LNAV/VNAV DA		321-¾	313 (400-¾)	
LNAV MDA		420-¾	412 (500-¾)	
CIRCLING	540-1	532 (600-1)	540-1½ 532 (600-1½)	560-2 552 (600-2)

MIRL Rwy 9R-27L
HIRL Rwy 9L-27R and 12-30 0

SE-3, 04 NOV 2021 to 02 DEC 2021

SE-3, 04 NOV 2021 to 02 DEC 2021