

# BNGOS ONE DEPARTURE (RNAV)

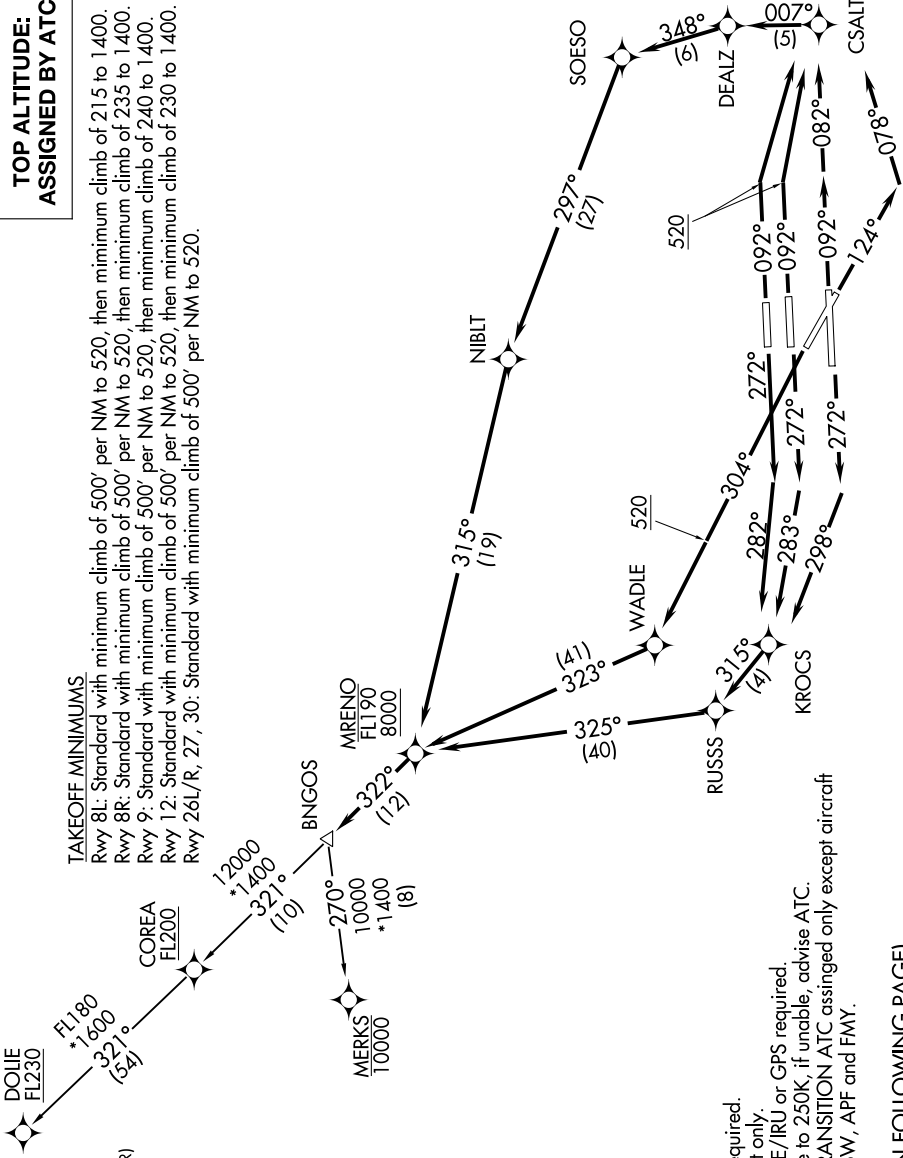
SE-3, 04 NOV 2021 to 02 DEC 2021

## TOP ALTITUDE: ASSIGNED BY ATC

### TAKEOFF MINIMUMS

Rwy 8L: Standard with minimum climb of 500' per NM to 520, then minimum climb of 215 to 1400.  
 Rwy 8R: Standard with minimum climb of 500' per NM to 520, then minimum climb of 235 to 1400.  
 Rwy 9: Standard with minimum climb of 500' per NM to 520, then minimum climb of 240 to 1400.  
 Rwy 12: Standard with minimum climb of 500' per NM to 520, then minimum climb of 230 to 1400.  
 Rwy 26L/R, 27, 30: Standard with minimum climb of 500' per NM to 520.

D-ATIS 133.675  
 CLNC DEL 135.35  
 CPDLC  
 GND CON  
 (Rwys 8L/R, 12, 26L/R) 121.8 348.6  
 (Rwys 9, 27, 30) 127.5 348.6  
 MIAMI TOWER 118.3 256.9  
 MIAMI DEP CON 119.45 290.325



NOTE: RNAV 1.  
 NOTE: RADAR required.  
 NOTE: Jet aircraft only.  
 NOTE: DME/DME/IRU or GPS required.  
 NOTE: Accelerate to 250K, if unable, advise ATC.  
 NOTE: MERKS TRANSITION ATC assigned only except aircraft landing: MKY, RSW, APF and FMY.

(NARRATIVE ON FOLLOWING PAGE)

NOTE: Chart not to scale.

SE-3, 04 NOV 2021 to 02 DEC 2021

# BNGOS ONE DEPARTURE (RNAV)