

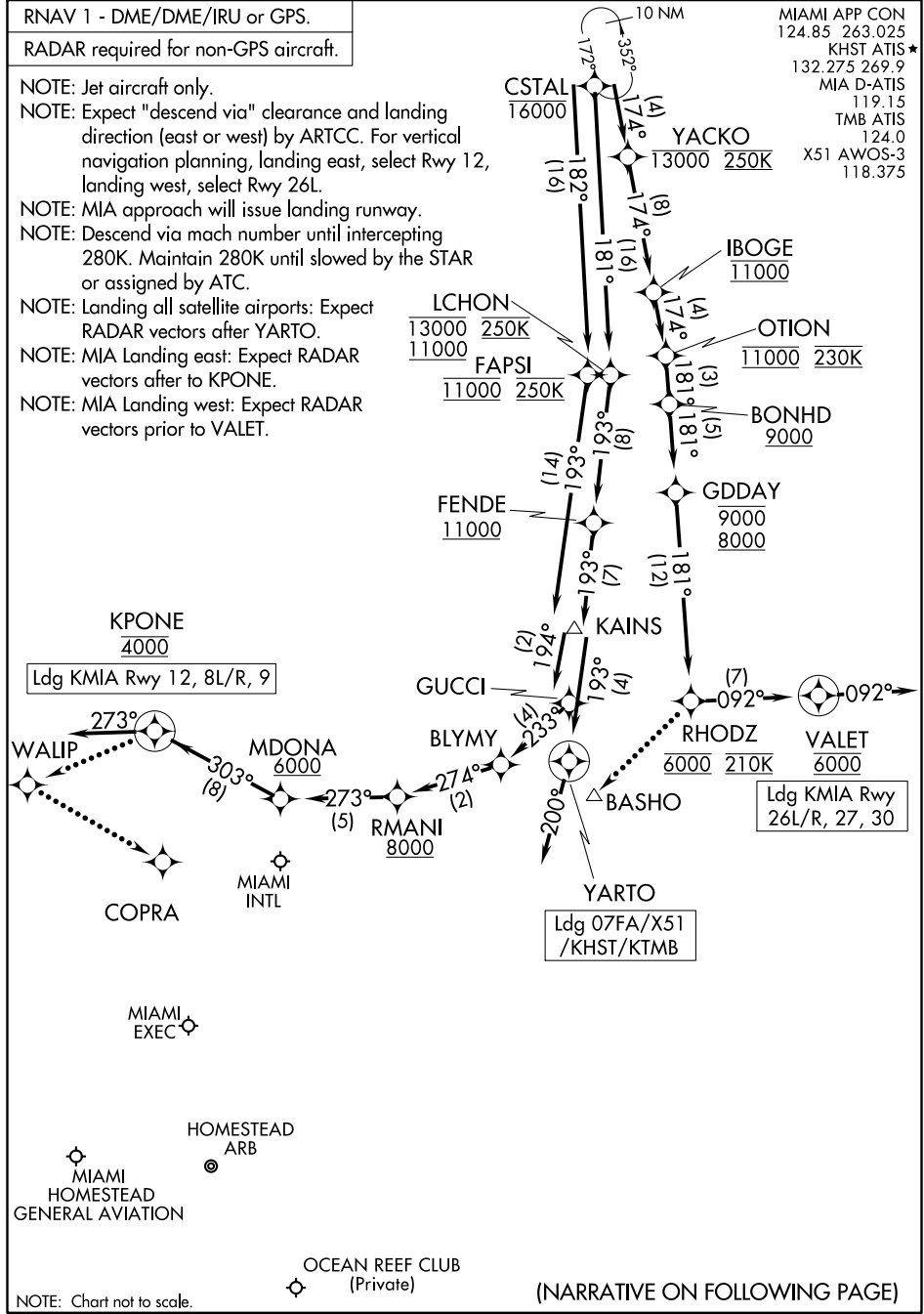
# CSTAL ONE ARRIVAL (RNAV) Arrival Routes

MIAMI, FLORIDA

RNAV 1 - DME/DME/IRU or GPS.
RADAR required for non-GPS aircraft.

- NOTE: Jet aircraft only.
- NOTE: Expect "descend via" clearance and landing direction (east or west) by ARTCC. For vertical navigation planning, landing east, select Rwy 12, landing west, select Rwy 26L.
- NOTE: MIA approach will issue landing runway.
- NOTE: Descend via mach number until intercepting 280K. Maintain 280K until slowed by the STAR or assigned by ATC.
- NOTE: Landing all satellite airports: Expect RADAR vectors after YARTO.
- NOTE: MIA Landing east: Expect RADAR vectors after to KPONE.
- NOTE: MIA Landing west: Expect RADAR vectors prior to VALET.

MIAMI APP CON  
124.85 263.025  
KHST ATIS\*  
132.275 269.9  
MIA D-ATIS  
119.15  
TMB ATIS  
124.0  
X51 AWOS-3  
118.375



SE-3, 04 NOV 2021 to 02 DEC 2021

SE-3, 04 NOV 2021 to 02 DEC 2021

NOTE: Chart not to scale.

(NARRATIVE ON FOLLOWING PAGE)