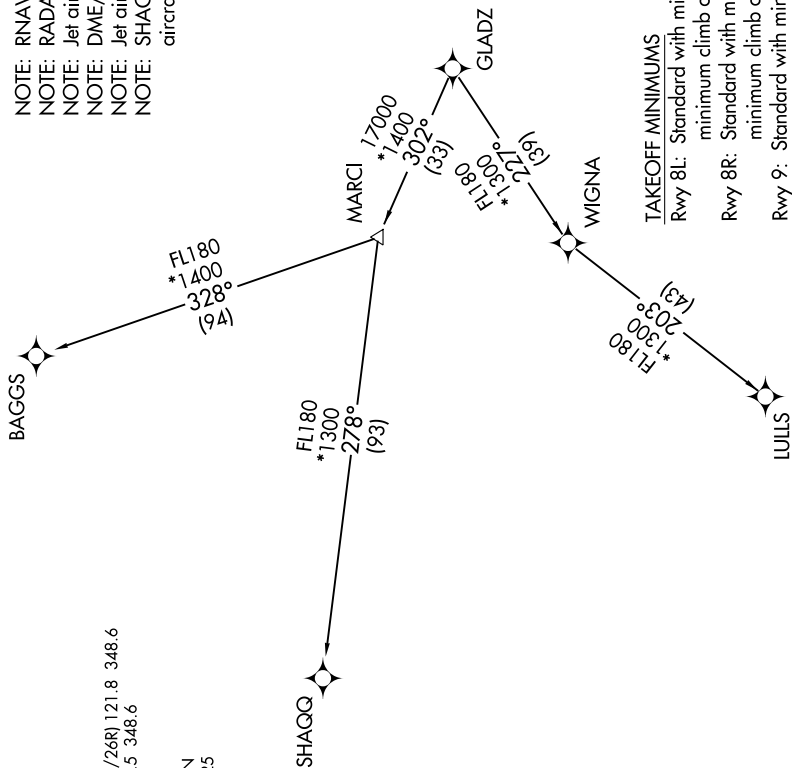


SE-3, 04 NOV 2021 to 02 DEC 2021

D-ATIS 133.675
CLNC DEL 135.35
CPDLC
GND CON (8L/8R, 12, 26L/26R) 121.8 348.6
(9, 27, 30) 127.5 348.6
MIAMI TOWER 118.3 256.9
MIAMI DEP CON 119.45 290.325

**TOP ALTITUDE:
ASSIGNED BY ATC**

NOTE: RNAV 1.
NOTE: RADAR required.
NOTE: Jet aircraft only.
NOTE: DME/DME/IRU or GPS required.
NOTE: Jet aircraft accelerate to 250K, if unable, advise ATC.
NOTE: SHAGQ and BAGGS transitions ATC assigned except aircraft departing MIA.



TAKEOFF MINIMUMS

Rwy 8L: Standard with minimum climb of 500' per NM to 520, then minimum climb of 215' to 1400.
 Rwy 8R: Standard with minimum climb of 500' per NM to 520, then minimum climb of 235' to 1400.
 Rwy 9: Standard with minimum climb of 500' per NM to 520, then minimum climb of 240' to 1400.
 Rwy 12: Standard with minimum climb of 500' per NM to 520, then minimum climb of 230' to 1400.
 Rwys 26L/R, 27, 30: Standard with minimum climb of 500' per NM to 520.

(NARRATIVE ON FOLLOWING PAGE)

NOTE: Chart not to scale.

SE-3, 04 NOV 2021 to 02 DEC 2021