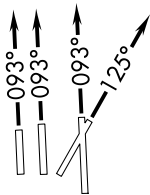


HUSIL ONE DEPARTURE (RNAV)

SE-3, 04 NOV 2021 to 02 DEC 2021

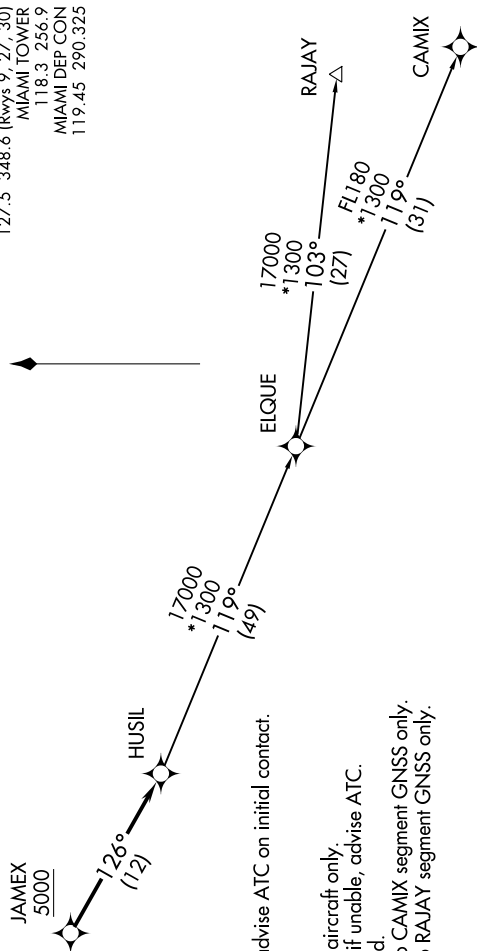
TOP ALTITUDE: ASSIGNED BY ATC



TAKEOFF MINIMUMS

Rwy 8L: Standard with minimum climb of 500' per NM to 700.
 Rwys 8R, 9, 12: Standard with minimum climb of 500' per NM to 800.

D-ATIS
133.675
CLNC DEL
135.35
CPDIC
GND CON
121.8 348.6 (Rwys 8L/R, 12, 26L/R)
127.5 348.6 (Rwys 9, 27, 30)
MIAMI TOWER
118.3 256.9
MIAMI DEP CON
119.45 290.325



NOTE: If unable to accept climb rate, advise ATC on initial contact.

NOTE: RNAV 1.

NOTE: RADAR required.

NOTE: KMIA, for Turboprop and Prop aircraft only.

NOTE: Jet aircraft accelerate to 250K, if unable, advise ATC.

NOTE: DME/DME/IRU or GPS required.

NOTE: CAMIX TRANSITION, ELQUE to CAMIX segment GNSS only.

NOTE: RAJAY TRANSITION, ELQUE to RAJAY segment GNSS only.

NOTE: Chart not to scale.

DEPARTURE ROUTE DESCRIPTION

TAKEOFF RUNWAYS 8L/R, 9: Climb on heading 093° or as assigned for RADAR vectors to cross JAMEX at or above 5000. Thence...
TAKEOFF RUNWAY 12: Climb on heading 125° or as assigned for RADAR vectors to cross JAMEX at or above 5000. Thence...

... on track 126° to HUSIL. Then on assigned transition. Maintain ATC assigned altitude, expect clearance to filed altitude within 10 minutes after departure.

CAMIX TRANSITION (HUSIL1.CAMIX)
RAJAY TRANSITION (HUSIL1.RAJAY)

SE-3, 04 NOV 2021 to 02 DEC 2021