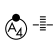


LOC/DME I-VIN 109.1 Chan 28	APP CRS 272°	Rwy Idg 10220 TDZE 9 Apt Elev 9
---	------------------------	--

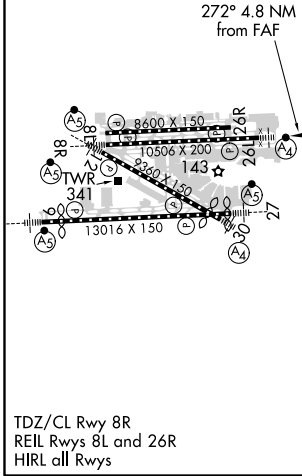
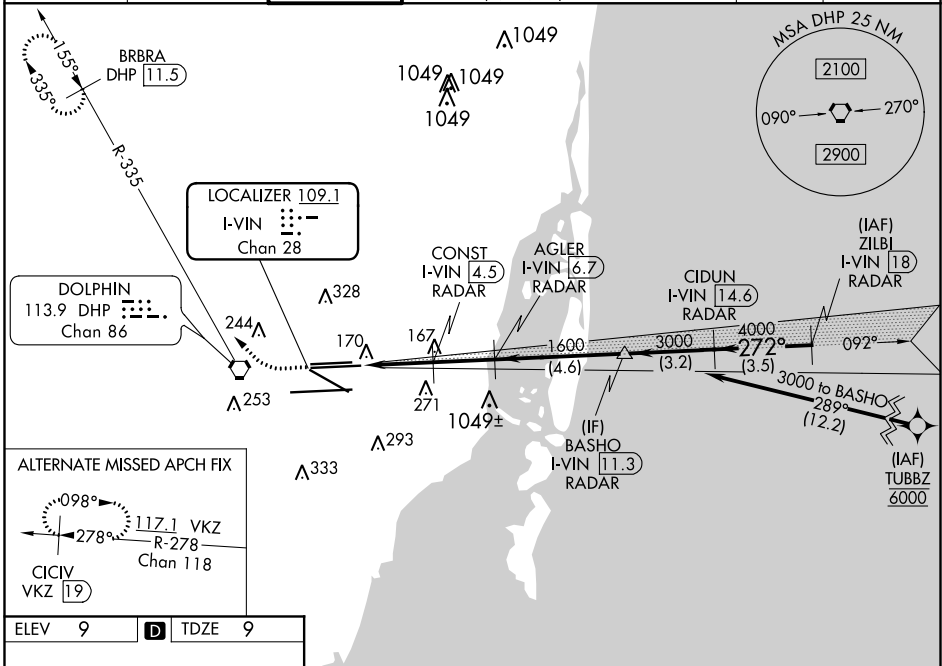
ILS or LOC RWY 26L

MIAMI INTL (MIA)

DME required. RNP APCH-GPS. From TUBBZ.
 Simultaneous approach authorized. Inop table does not apply to S-ILS 26L all Cats. For inop ALS, increase S-LOC 26L Cats A/B visibility to RVR 5500 and Cats C/D visibility to RVR 6000.

MALSF 
 MISSED APPROACH: Climb to 800 then climbing right turn to 4000 on heading 290° and DHP VORTAC R-335 to BRBRA/DHP 11.5 DME and hold, continue climb-in-hold to 4000.

D-ATIS ARR 119.15 DEP 133.675	MIAMI APP CON 124.85 322.3	MIAMI TOWER 118.3 256.9	GND CON 121.8 (8L/8R/12/26L/26R) 127.5 (9/27/30)	348.6	CINC DEL 135.35	CPDLC
---	--------------------------------------	-----------------------------------	--	--------------	---------------------------	-------



800	4000	DHP R-335	BRBRA DHP 11.5	VGSI and ILS glidepath not coincident (VGSI Angle 3.00/TCH 73).	
1.1	1.5 NM	2.2 NM	4.6 NM	3.2 NM	3.5 NM
CATEGORY	A	B	C	D	
S-ILS 26L	209/40		200 (200-¾)		
S-LOC 26L	420/40	411 (500-¾)		420/50	411 (500-1)

SE-3, 04 NOV 2021 to 02 DEC 2021

SE-3, 04 NOV 2021 to 02 DEC 2021