


LOC/DME I-MFA 110.3 Chan 40	APP CRS 092°	Rwy Idg 10506 TDZE 8 Apt Elev 9
-------------------------------------------------	------------------------	------------------------------------------------------------

ILS or LOC RWY 8R

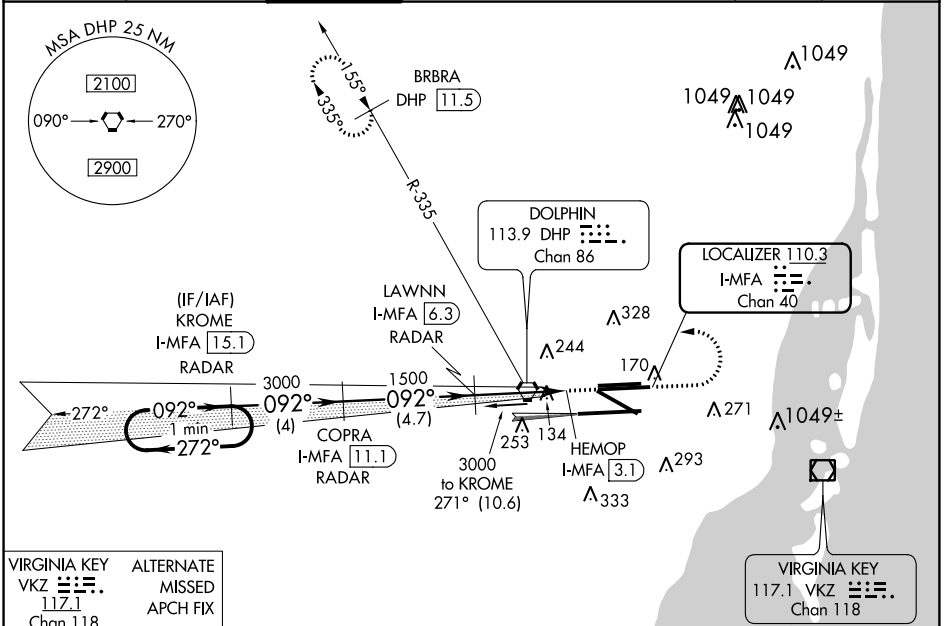
MIAMI INTL (MIA)

▼ For inop MALSRS, increase S-ILS 8 all Cats visibility to 1½ mile. Simultaneous approach authorized with Rwy 9. Autopilot coupled approach NA below 500 feet. DME required.

MALSRS 

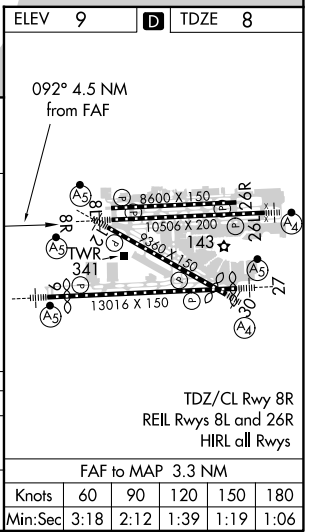
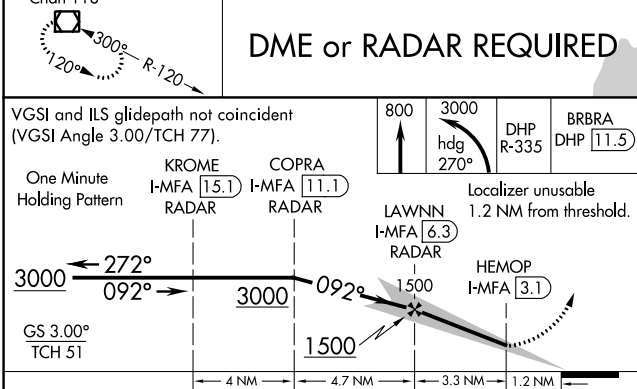
MISSED APPROACH: Climb to 800 then climbing left turn to 3000 on heading 270° and on DHP VORTAC R-335 to BRBRA/DHP 11.5 DME and hold.

D-ATIS ARR 119.15 DEP 133.675	MIAMI APP CON 124.85 322.3	MIAMI TOWER 118.3 256.9	GND CON 121.8 (8L/8R/12/26L/26R) 127.5 (9/27/30)	348.6	CLNC DEL 135.35	CPDLC
---------------------------------------------------	--------------------------------------	-----------------------------------	----------------------------------------------------------------------	--------------	---------------------------	-------



VIRGINIA KEY ALTERNATE
VKZ MISSED
117.1 APCH FIX
Chan 118

DME or RADAR REQUIRED



CATEGORY	A	B	C	D
S-ILS 8R	450/50		442 (500-1)	
S-LOC 8R	560/50		552 (600-1)	
			560/60 552 (600-1¼)	

SE-3, 04 NOV 2021 to 02 DEC 2021

SE-3, 04 NOV 2021 to 02 DEC 2021