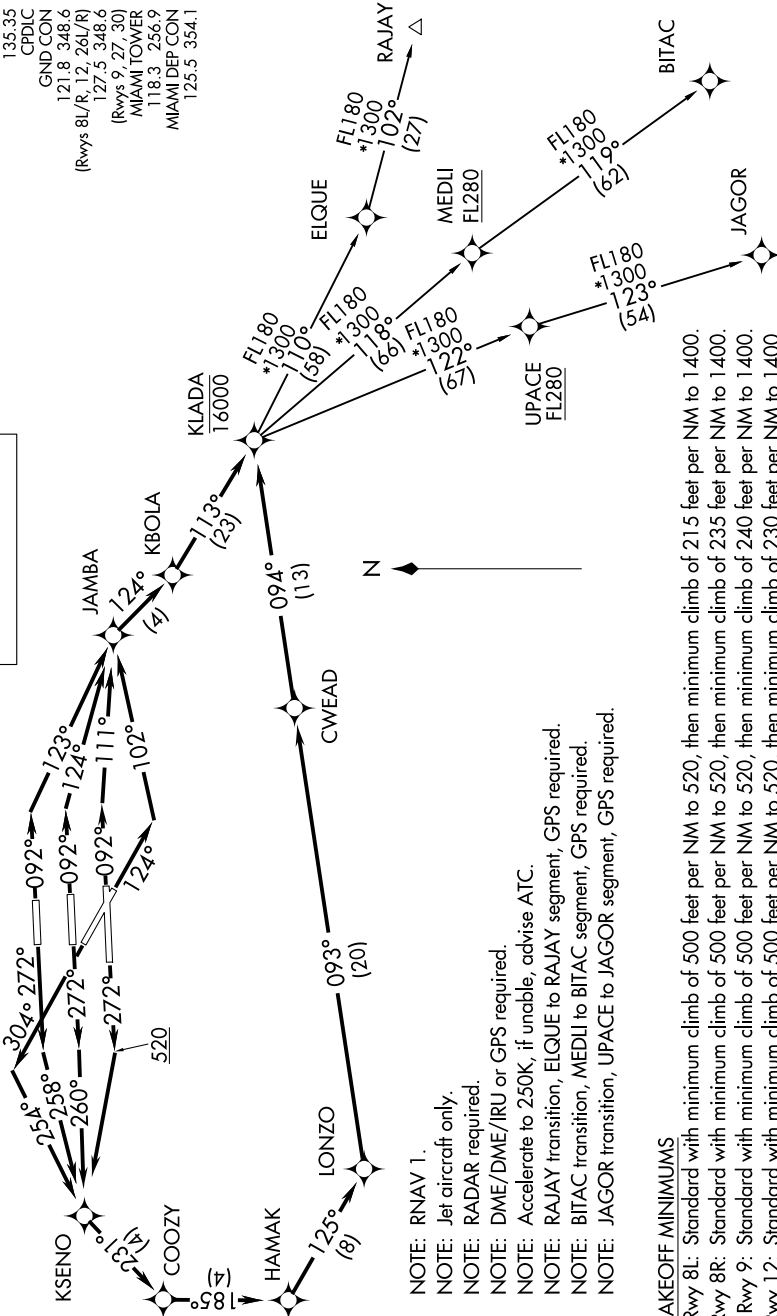


# KLADA ONE DEPARTURE (RNAV)

D-ATIS  
133.675  
CINC DEL  
135.35  
CPDIC  
GND CON  
121.8 348.6  
(Rwys 8L/R, 12, 26L/R)  
127.5 348.6  
(Rwys 9, 27, 30)  
MIAMI TOWER  
118.3 256.9  
MIAMI DEP CON  
125.5 354.1

## TOP ALTITUDE: ASSIGNED BY ATC



NOTE: Chart not to scale.

### TAKEOFF MINIMUMS

- Rwy 8L: Standard with minimum climb of 500 feet per NM to 520, then minimum climb of 215 feet per NM to 1400.
- Rwy 8R: Standard with minimum climb of 500 feet per NM to 520, then minimum climb of 235 feet per NM to 1400.
- Rwy 9: Standard with minimum climb of 500 feet per NM to 520, then minimum climb of 240 feet per NM to 1400.
- Rwy 12: Standard with minimum climb of 500 feet per NM to 520, then minimum climb of 230 feet per NM to 1400.
- Rwys 26L/R, 27, 30: Standard with minimum climb of 500 feet per NM to 520.

- NOTE: RNAV 1.
- NOTE: Jet aircraft only.
- NOTE: RADAR required.
- NOTE: DME/DME/IRU or GPS required.
- NOTE: Accelerate to 250K, if unable, advise ATC.
- NOTE: RAJAY transition, ELQUE to RAJAY segment, GPS required.
- NOTE: BITAC transition, MEDLI to BITAC segment, GPS required.
- NOTE: JAGOR transition, UPACE to JAGOR segment, GPS required.

(NARRATIVE ON FOLLOWING PAGE)