

# MHITO ONE DEPARTURE (RNAV) Transition Routes

SE-3, 04 NOV 2021 to 02 DEC 2021

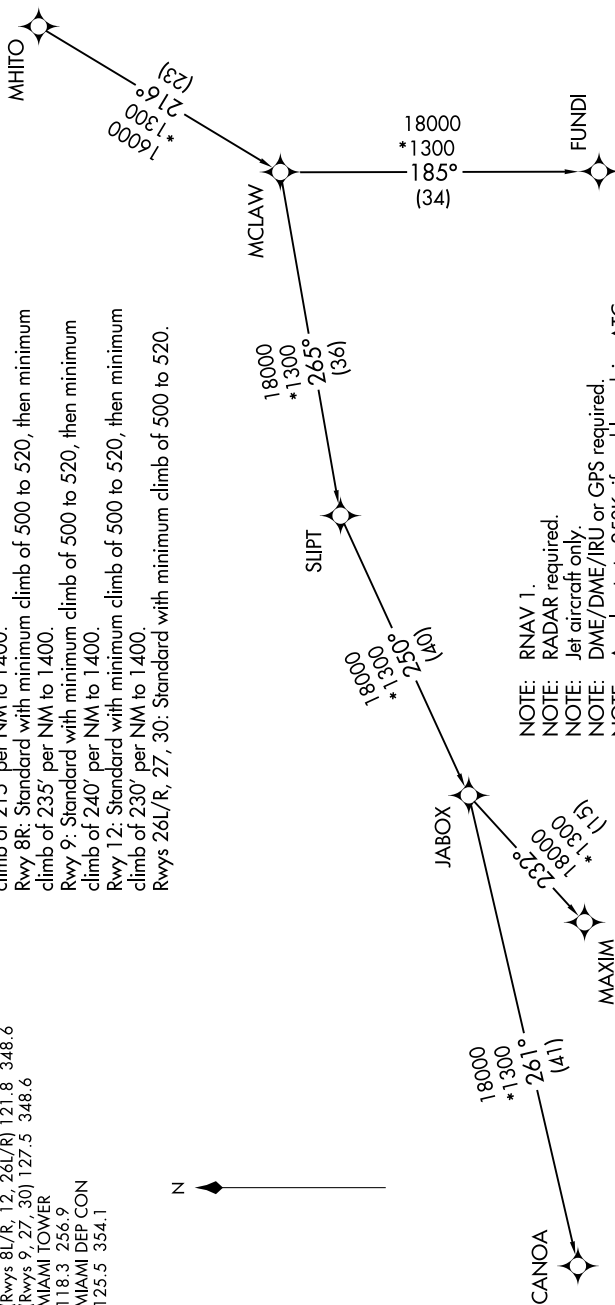
D-ATIS  
133.675  
CLNC DEL  
135.35  
CPDLC  
GND CON  
(Rwys 8L/R, 12, 26L/R) 121.8 348.6  
(Rwys 9, 27, 30) 127.5 348.6  
MIAMI TOWER  
118.3 256.9  
MIAMI DEP CON  
125.5 354.1

### TAKEOFF MINIMUMS

- Rwy 8L: Standard with minimum climb of 500 to 520, then minimum climb of 215' per NM to 1400.
- Rwy 8R: Standard with minimum climb of 500 to 520, then minimum climb of 235' per NM to 1400.
- Rwy 9: Standard with minimum climb of 500 to 520, then minimum climb of 240' per NM to 1400.
- Rwy 12: Standard with minimum climb of 500 to 520, then minimum climb of 230' per NM to 1400.
- Rwys 26L/R, 27, 30: Standard with minimum climb of 500 to 520.



### TOP ALTITUDE: ASSIGNED BY ATC



- NOTE: RNAV 1.
- NOTE: RADAR required. Jet aircraft only.
- NOTE: DME/DME/IRU or GPS required.
- NOTE: Accelerate to 250K, if unable, advise ATC.
- NOTE: MAXIM and CANOA TRANSITIONS, ATC assigned except aircraft departing: MIA, FL, OFF.
- NOTE: MAXIM TRANSITION, SLIPT to MAXIM GPS only.
- NOTE: CANOA TRANSITION, SLIPT to CANOA GPS only.

NOTE: Chart not to scale.

(NARRATIVE ON FOLLOWING PAGE)

SE-3, 04 NOV 2021 to 02 DEC 2021