

# PALMZ ONE ARRIVAL

MIAMI, FLORIDA

SE-3, 04 NOV 2021 to 02 DEC 2021

## ARRIVAL ROUTE DESCRIPTION

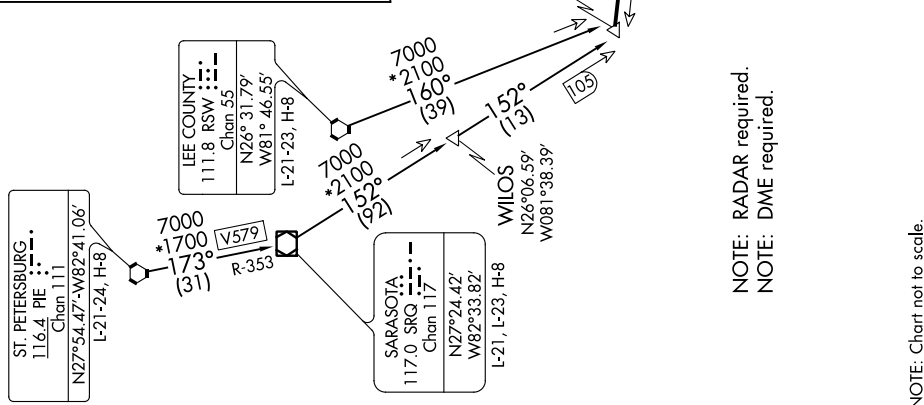
ST PETESBURG TRANSITION (PIE.PALMZ1): From over PIE VORTAC on PIE R-173 and SRQ R-353 to SRQ VOR/DME then on SRQ R-152 to PALMZ. Thence. . . . .

LEE COUNTY TRANSITION (RSW.PALMZ1): From over RSW VORTAC on RSW R-160 to PALMZ. Thence. . . . .

SARASOTA TRANSITION (SRQ.PALMZ1): From over SRQ VOR/DME on SRQ R-152 PALMZ. Thence. . . . .

. . . . .Landing all airports: from PALMZ on DOLPHIN VORTAC (DHP) R-281 to PRIVY, thence as depicted to DHP VORTAC.  
Expect RADAR vectors to final approach course.

MIAMI APP CON  
120.5 350.225  
MIA D-ATIS  
119.15  
OPF ATIS  
125.9  
TMB ATIS  
124.0  
X51 AWOS-3  
118.375



NOTE: RADAR required.  
NOTE: DME required.

NOTE: Chart not to scale.

# PALMZ ONE ARRIVAL

(PALMZ.PALMZ1) 22APR21

MIAMI, FLORIDA

SE-3, 04 NOV 2021 to 02 DEC 2021