

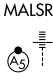
WAAS CH 81931 W09A	APP CRS 092°	Rwy Idg 11397 TDZE 7 Apt Elev 9
--	------------------------	--

RNAV (GPS) RWY 9

MIAMI INTL (MIA)

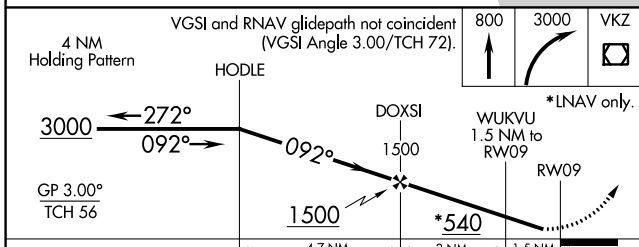
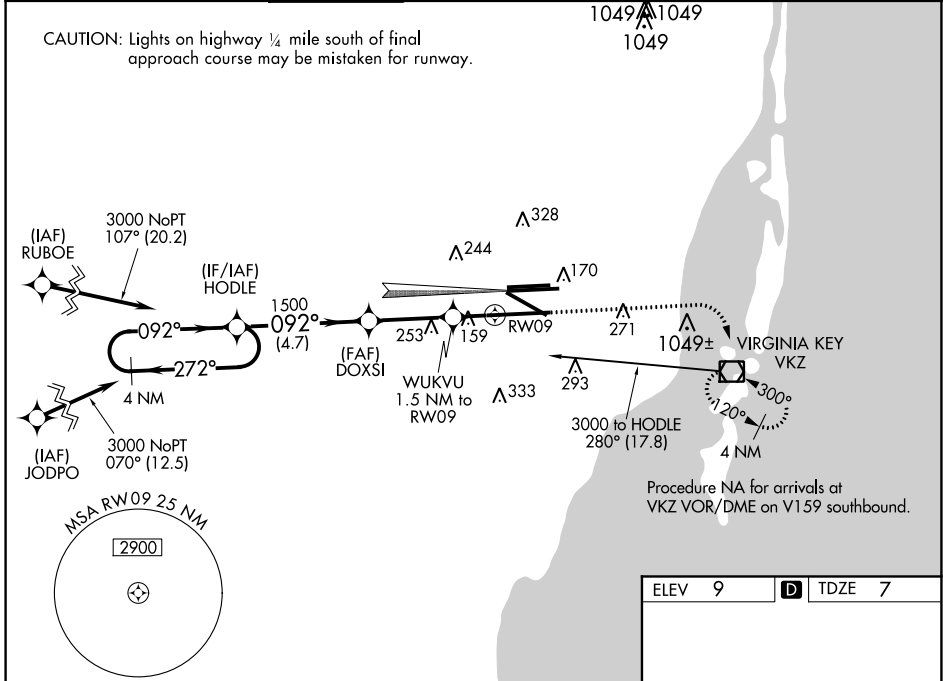
▼ For uncompensated Baro-VNAV systems, LNAV/VNAV NA below 5°C (41°F) or above 54°C (130°F). DME/DME RNP-0.3 NA. Simultaneous approach authorized with ILS or LOC Rwy 8R and RNAV (GPS) Rwy 8L. LNAV procedure NA during simultaneous operations. Use of FD or AP providing RNAV track guidance required during simultaneous operations. Helicopter visibility reduction below RVR 4000 NA. For inop MALSR, increase LPV Cat E visibility to RVR 4000, LNAV/VNAV Cat E visibility to 1 3/8 mile, LNAV Cats A and B visibility to RVR 5500 and Cats C, D, and E visibility to 1 3/8 mile. **RVR 1800 authorized with use of FD or AP or HUD to DA.

MALSRL

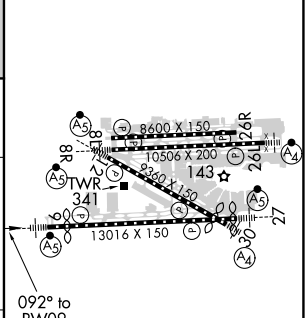


MISSED APPROACH:
Climb to 800 then climbing right turn to 3000 direct VKZ VOR/DME and hold, continue climb-in-hold to 3000.

D-ATIS	MIAMI APP CON	MIAMI TOWER	GND CON	CLNC DEL	CPDLC
ARR 119.15 DEP 133.675	124.85 322.3	118.3 256.9	121.8 (8L/8R/12/26L/26R) 348.6 127.5 (9/27/30)	135.35	



ELEV 9	D TDZE 7
--------	-----------------



CATEGORY	A	B	C	D	E
LPV DA**		207/24	200 (200-1/2)		
LNAV/VNAV DA		428/46	421 (500-1)		
LNAV MDA	460/40	453 (500-3/4)	460/45	453 (500-7/8)	

TDZ/CL Rwy 8R
REIL Rwy 8L and 26R
HIRL all Rwy

SE-3, 04 NOV 2021 to 02 DEC 2021

SE-3, 04 NOV 2021 to 02 DEC 2021