

APP CRS	Rwy Idg	<b>8579</b>
<b>124°</b>	TDZE	<b>8</b>
	Apt Elev	<b>9</b>

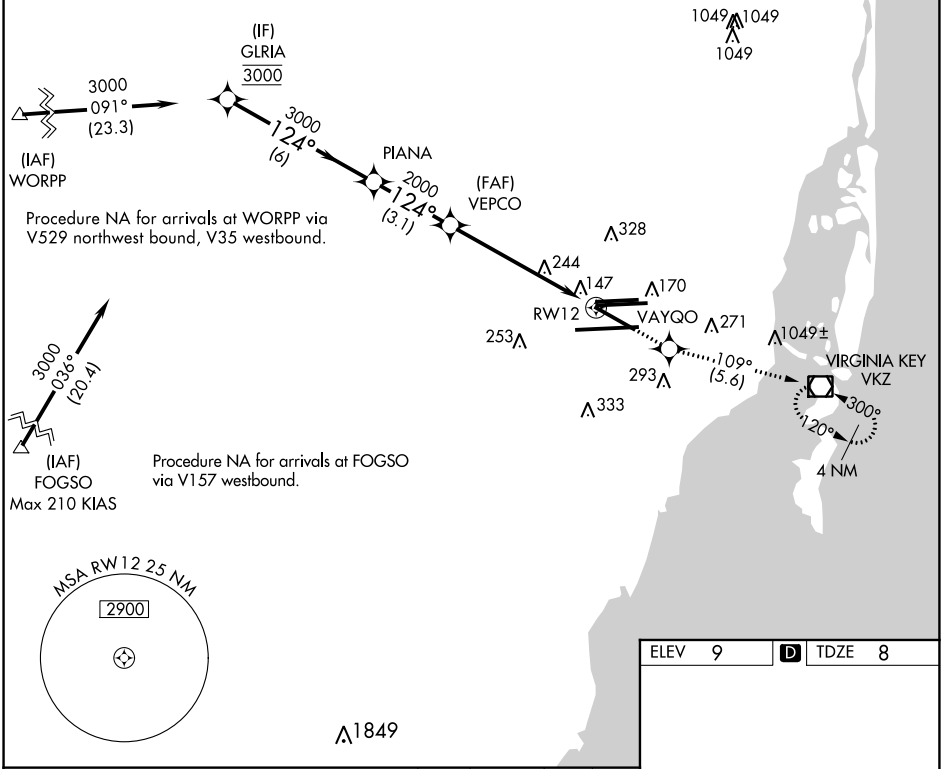
# RNAV (RNP) Y RWY 12

MIAMI INTL (MIA)

**GPS Required.** For inoperative MALSRL, increase 0.30 all Cats visibility to 1½. For uncompensated Baro-VNAV systems, procedure NA below 6°C (42°F) or above 49°C (120°F).

**MALSRL** MISSED APPROACH: Climb to 3000 direct VAYGO and via 109° track to VKZ VOR/DME and hold, continue climb-in-hold to 3000.

D-ATIS ARR <b>119.15</b> DEP <b>133.675</b>	MIAMI APP CON <b>124.85 322.3</b>	MIAMI TOWER <b>118.3 256.9</b>	GND CON <b>121.8</b> (8L/8R/12/26L/26R) <b>127.5</b> (9/27/30)	<b>348.6</b>	CLNC DEL <b>135.35</b>	CPDLC
---	--------------------------------------	-----------------------------------	--	--------------	---------------------------	-------



Procedure Turn NA	VGSi and RNAV glidepath not coincident (VGSi Angle 3.00/TCH 72).			
	GLRIA	PIANA	VEPCO	RWY 12
GP 3.00° TCH 56	3000	3000	2000	
	6 NM	3.1 NM	6 NM	
CATEGORY	A	B	C	D
RNP 0.30 DA		461/50	453 (500-1)	
<b>AUTHORIZATION REQUIRED</b>				

ELEV 9	TDZE 8
--------	--------

This diagram shows the final segment of the RNP Y RWY 12 approach. It details the 124° track from VAYGO to RWY 12 and the 109° track from VAYGO to VKZ. Obstructions are labeled with their MSL altitudes: 8600 X 150, 10506 X 200, 240, 266, 271, 341, 143, 260 X 150, 13016 X 150, and 27. A 4 NM distance is marked between VAYGO and RWY 12.

TDZ/CL Rwy 8R  
REIL Rwy 8L and 26R  
HIRL all Rwy 8

SE-3, 04 NOV 2021 to 02 DEC 2021

SE-3, 04 NOV 2021 to 02 DEC 2021