

APP CRS	Rwy Idg	<b>10506</b>
<b>092°</b>	TDZE	<b>8</b>
	Apt Elev	<b>9</b>

# RNAV (RNP) Y RWY 8R

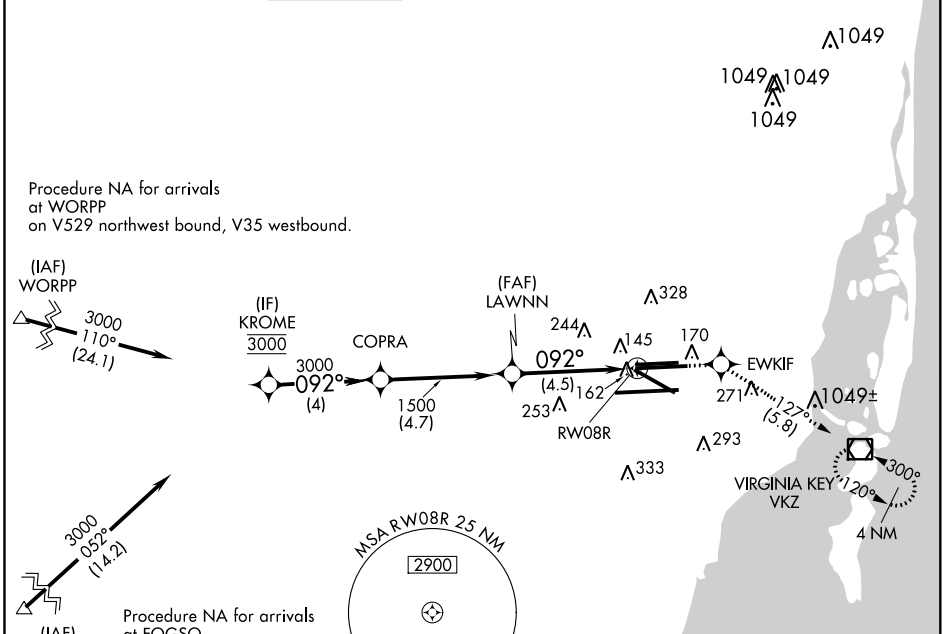
MIAMI INTL (MIA)

**▼** For uncompensated Baro-VNAV systems, procedure NA below 6°C (43°F) or above 54°C (130°F). GPS required. For inop MALSR, increase RNP 0.11 all Cats visibility to 1¼ mile.  
 \*Missed approach requires minimum climb of 330 feet per NM to 600.



**MISSED APPROACH:** Climb to 3000 direct EWKIF and on track 127° to VKZ VOR/DME and hold, continue climb-in-hold to 3000.

D-ATIS	MIAMI APP CON	MIAMI TOWER	GND CON	CLNC DEL	CPDLC
ARR <b>119.15</b>	<b>124.85 322.3</b>	<b>118.3 256.9</b>	<b>121.8</b> (8L/8R/12/26L/26R)	<b>135.35</b>	
DEP <b>133.675</b>			<b>127.5</b> (9/27/30)	<b>348.6</b>	



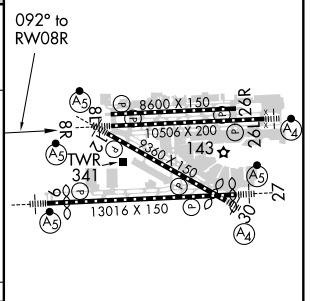
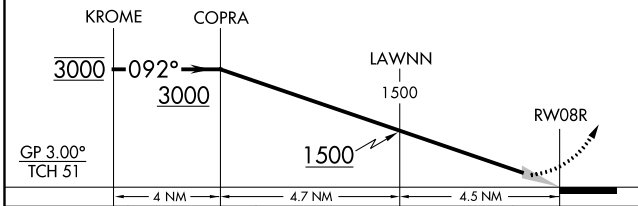
SE-3, 04 NOV 2021 to 02 DEC 2021

SE-3, 04 NOV 2021 to 02 DEC 2021

ELEV	9	TDZE	8
------	---	------	---

VGSI and RNAV glidepath not coincident (VGSI Angle 3.00/TCH 77).

3000	EWKIF	VKZ
↑	✦	tr 127°



CATEGORY	A	B	C	D
*RNP 0.11 DA		397/45	389 (400-7%)	
RNP 0.30 DA		458/50	450 (500-1)	

## AUTHORIZATION REQUIRED

TDZ/CL Rwy 8R  
 REIL Rwy 8L and 26R  
 HIRL all Rwy 8