

MIAMI, FLORIDA

AL-257 (FAA)

21224

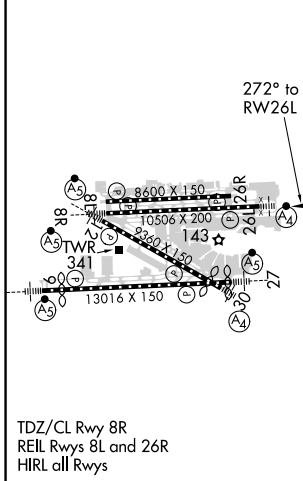
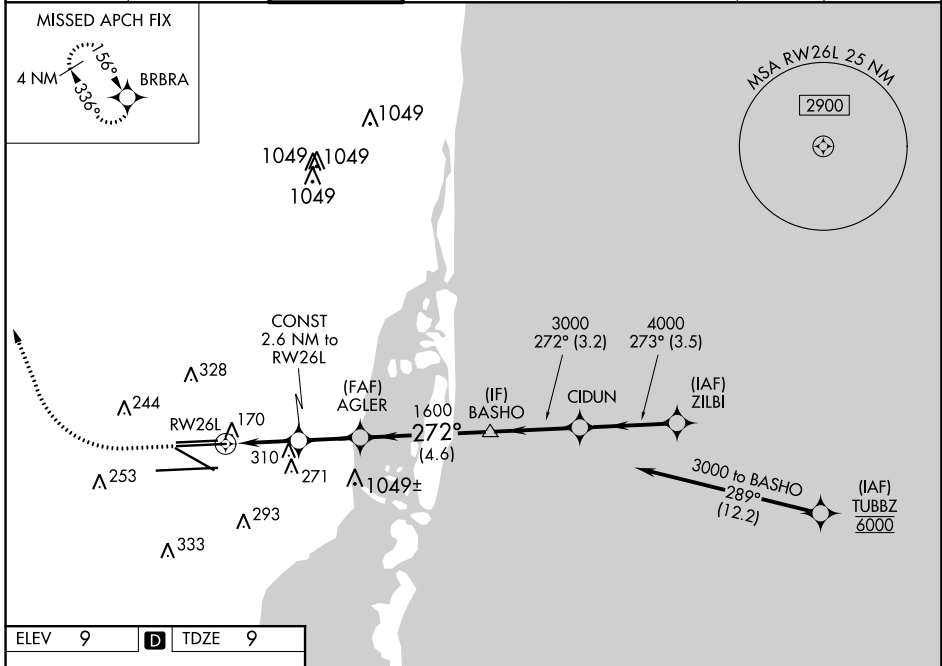
WAAS CH <b>81905</b> <b>W26B</b>	APP CRS <b>272°</b>	Rwy Idg <b>10220</b> TDZE <b>9</b> Apt Elev <b>9</b>
--	------------------------	--

# RNAV (GPS) Y RWY 26L

MIAMI INTL (MIA)

RNP APCH - GPS.	MALSF	MISSED APPROACH: Climb to 800 then climbing right turn to 4000 direct BRBRA and hold, continue climb-in-hold to 4000.
-----------------	-------	---

D-ATIS ARR <b>119.15</b> DEP <b>133.675</b>	MIAMI APP CON <b>124.85 322.3</b>	MIAMI TOWER <b>118.3 256.9</b>	GND CON <b>121.8</b> (8L/8R/12/26L/26R) <b>127.5</b> (9/27/30)	<b>348.6</b>	CLNC DEL <b>135.35</b>	CPDLC
---	--------------------------------------	-----------------------------------	--	--------------	---------------------------	-------



ELEV 9	<b>D</b>	TDZE 9	
800	4000	BRBRA	VGSI and descent angles not coincident (VGSI Angle 3.00/TCH 73).
<p>CONST 2.6 NM to RW26L</p> <p>1.5 NM to RW26L</p> <p>AGLER 1600</p> <p>BASHO 3000</p> <p>CIDUN 4000</p> <p>ZILBI 5000</p> <p>GP 3.00° TCH 58</p>			
<p>1.5 NM 1.1 NM 2.2 NM 4.6 NM 3.2 NM 3.5 NM</p>			
CATEGORY	A	B	C
LPV DA		209/40	200 (200-¾)
LNAV/VNAV DA		348/40	339 (400-¾)
LNAV MDA	560/40	551 (600-¾)	560-1⅓ 551 (600-1⅓)

MIAMI, FLORIDA  
Amdt 3 12AUG21

25°48'N-80°17'W

# RNAV (GPS) Y RWY 26L

MIAMI INTL (MIA)

SE-3, 04 NOV 2021 to 02 DEC 2021

SE-3, 04 NOV 2021 to 02 DEC 2021