

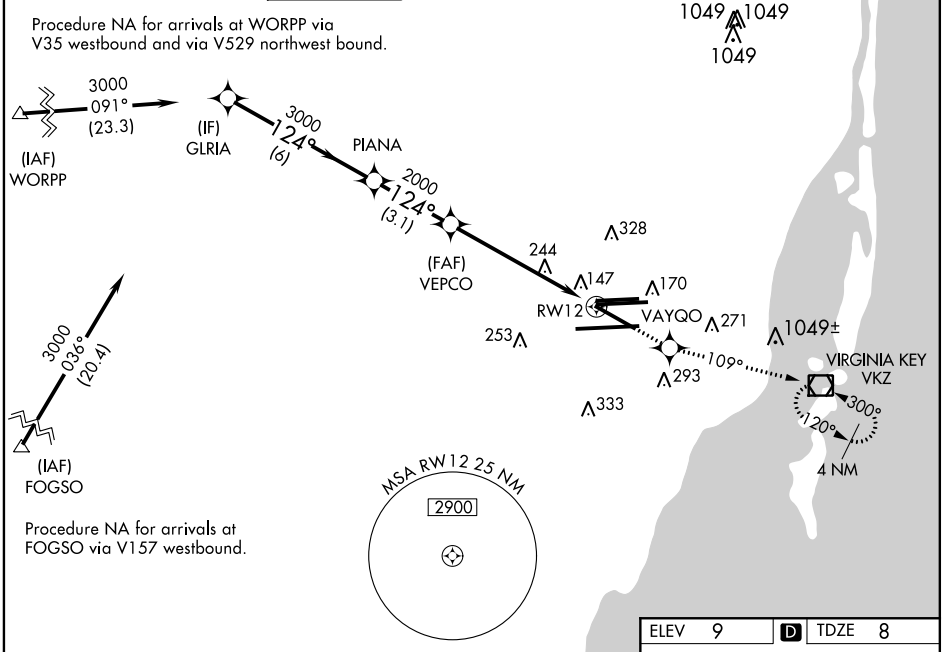
WAAS CH 61204 W12A	APP CRS 124°	Rwy Idg TDZE Apt Elev	8579 8 9
--	------------------------	-----------------------------	-------------------------------------

RNAV (GPS) Z RWY 12

MIAMI INTL (MIA)

<p>▼ For inoperative MALS/R, increase LPV DA all Cats visibility to 1¼, increase LNAV MDA Cats A and B visibility to RVR 5000.</p> <p>▼ For uncompensated Baro-VNAV systems, LNAV/VNAV NA below -15°C (5°F) or above 49°C (120°F). DME/DME RNP-0.3 NA. Visibility reduction by helicopters NA.</p>	<p>MALS/R</p>	<p>MISSED APPROACH: Climb to 3000 direct VAYGO and via 109° track to VKZ VOR/DME and hold, continue climb-in-hold to 3000.</p>
--	---------------	--

D-ATIS	MIAMI APP CON	MIAMI TOWER	GND CON	CLNC DEL	CPDLC
ARR 119.15	124.85 322.3	118.3 256.9	121.8 (8L/8R/12/26L/26R)	348.6	
DEP 133.675			127.5 (9/27/30)	135.35	



SE-3, 04 NOV 2021 to 02 DEC 2021

SE-3, 04 NOV 2021 to 02 DEC 2021

<p>VGSI and RNAV glidepath not coincident (VGSI Angle 3.00/TCH 72).</p>		<p>3000</p>	<p>VAYGO</p>	<p>109° tr</p>	<p>VKZ</p>
<p>Procedure Turn NA</p>	<p>GLRIA</p>	<p>PIANA</p>	<p>VEPCO</p>	<p>RWY12</p>	<p>*LNAV only.</p>
<p>GP 3.00° TCH 56</p>	<p>3000</p>	<p>3000</p>	<p>2000</p>	<p>*1.6 NM to RWY12</p>	
	6 NM	3.1 NM	4.4 NM	1.6 NM	
CATEGORY	A	B	C	D	
LPV DA	390/40		382 (400-¾)		
LNAV/VNAV DA	506/60		498 (500-1¼)		
LNAV MDA	600/40	592 (600-¾)	600/50	600/60	
		592 (600-1)	592 (600-1¼)		

TDZ/CL Rwy 8R
REIL Rwy 8L and 26R
HIRL all Rwy