

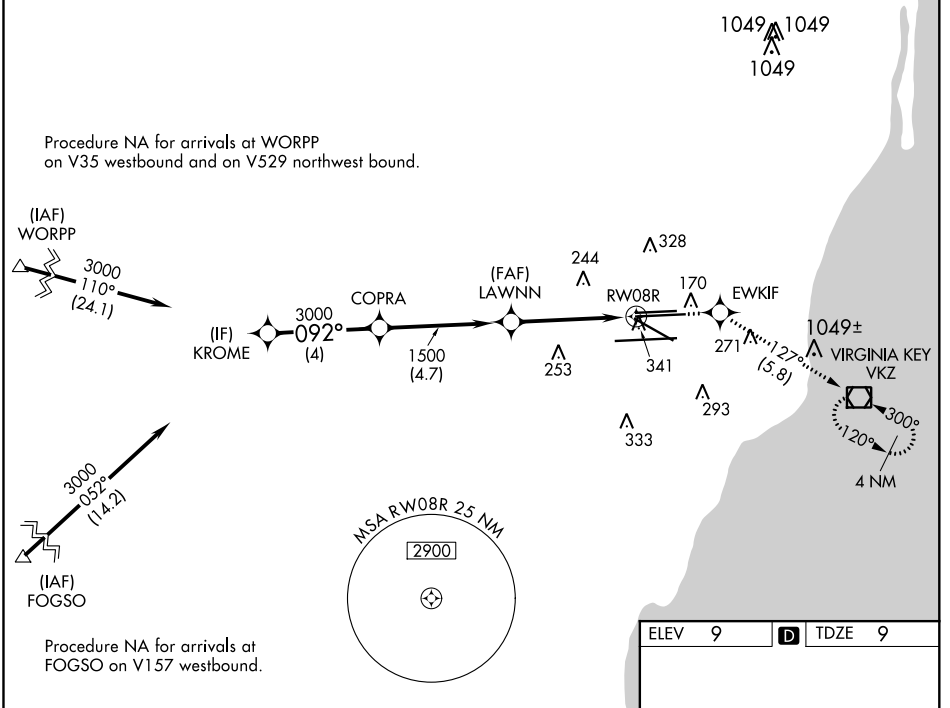
WAAS CH 97404 W08B	APP CRS 092°	Rwy Idg 10506 TDZE 9 Apt Elev 9
--	------------------------	--

RNAV (GPS) Z RWY 8R

MIAMI INTL (MIA)

RNP APCH. ▼ Rwy 8R helicopter visibility reduction below RVR 4000 NA. For uncompensated Baro-VNAV systems, LNAV/VNAV NA below 8°C or above 54°C. For inop ALS, increase LPV all Cats visibility to RVR 4500, LNAV/VNAV Cats C and D visibility to 1½ SM and LNAV Cats A and B visibility to RVR 5500.	MALSR 	MISSED APPROACH: Climb to 3000 direct EWKIF and on track 127° to VKZ VOR/DME and hold.
--	-----------	--

D-ATIS ARR 119.15 DEP 133.675	MIAMI APP CON 124.85 322.3	MIAMI TOWER 118.3 256.9	GND CON 121.8 (8L/8R/12/26L/26R) 127.5 (9/27/30)	348.6	CLNC DEL 135.35	CPDLC
---	--------------------------------------	-----------------------------------	--	--------------	---------------------------	-------



VGSi and RNAV glidepath not coincident (VGSi Angle 3.00/TCH 77).		3000	EWKIF	tr 127°	VKZ
KROME	COPRA	LAWNN	RW08R	*LNAV only.	
3000	3000	1500	1.6 NM to RW08R		
GP 3.00° TCH 51					
	4 NM	4.7 NM	2.9 NM	1.6 NM	
CATEGORY	A	B	C	D	
LPV DA		277/40	268 (300-¾)		
LNAV/VNAV DA		531/60	522 (600-1¼)		
LNAV MDA	600/40	591 (600-¾)	600-1¼	591 (600-1¼)	

TDZ/CL Rwy 8R
REIL Rwy 8L and 26R
HIRL all Rwy 8R

SE-3, 04 NOV 2021 to 02 DEC 2021

SE-3, 04 NOV 2021 to 02 DEC 2021