

VACAY ONE DEPARTURE (RNAV)

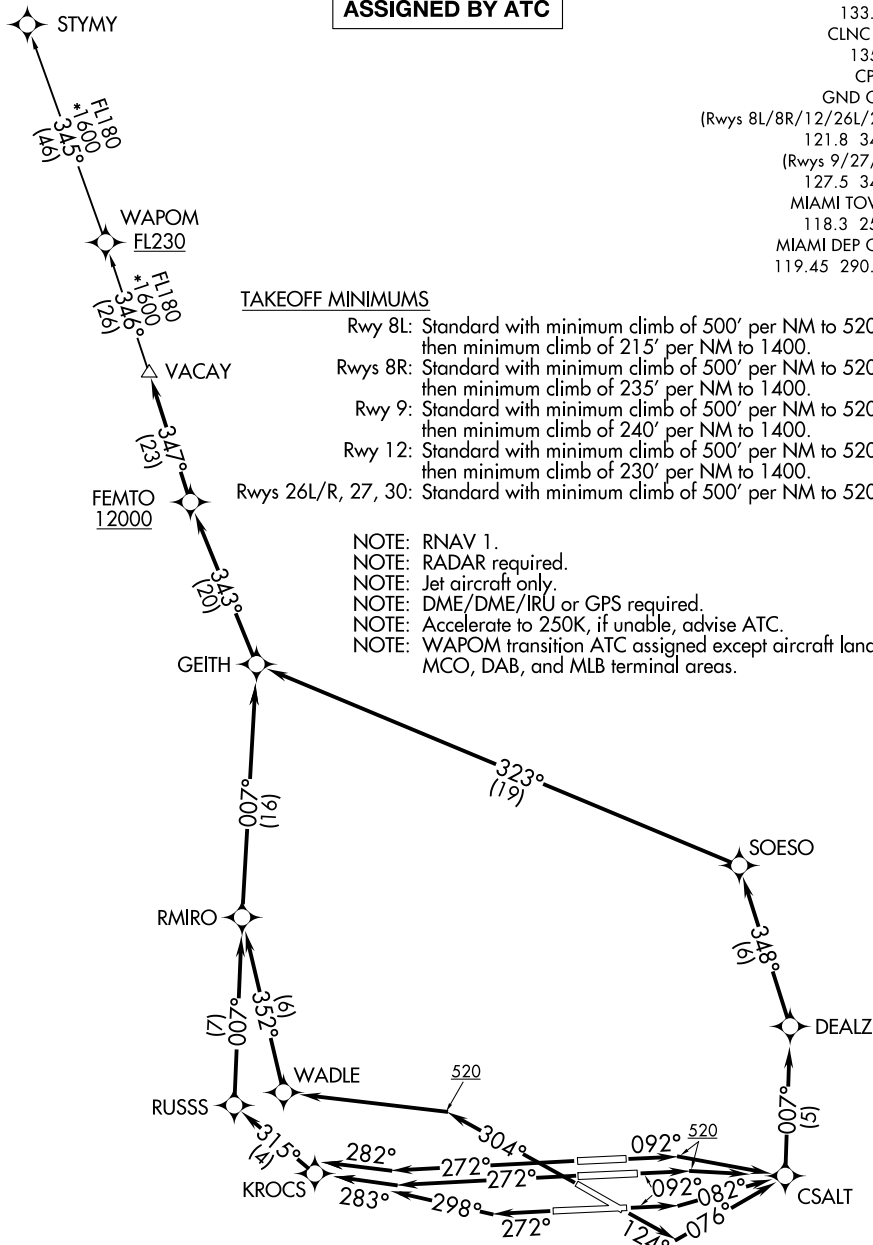
**TOP ALTITUDE:
ASSIGNED BY ATC**

- D-ATIS 133.675
- CLNC DEL 135.35
- CPDLC
- GND CON (Rwys 8L/8R/12/26L/26R) 121.8 348.6
- (Rwys 9/27/30) 127.5 348.6
- MIAMI TOWER 118.3 256.9
- MIAMI DEP CON 119.45 290.325

TAKEOFF MINIMUMS

- Rwy 8L: Standard with minimum climb of 500' per NM to 520, then minimum climb of 215' per NM to 1400.
- Rwys 8R: Standard with minimum climb of 500' per NM to 520, then minimum climb of 235' per NM to 1400.
- Rwy 9: Standard with minimum climb of 500' per NM to 520, then minimum climb of 240' per NM to 1400.
- Rwy 12: Standard with minimum climb of 500' per NM to 520, then minimum climb of 230' per NM to 1400.
- Rwys 26L/R, 27, 30: Standard with minimum climb of 500' per NM to 520.

- NOTE: RNAV 1.
- NOTE: RADAR required.
- NOTE: Jet aircraft only.
- NOTE: DME/DME/IRU or GPS required.
- NOTE: Accelerate to 250K, if unable, advise ATC.
- NOTE: WAPOM transition ATC assigned except aircraft landing: MCO, DAB, and MLB terminal areas.



(NARRATIVE ON FOLLOWING PAGE)

NOTE: Chart not to scale.

SE-3, 04 NOV 2021 to 02 DEC 2021

SE-3, 04 NOV 2021 to 02 DEC 2021

VACAY ONE DEPARTURE (RNAV)