

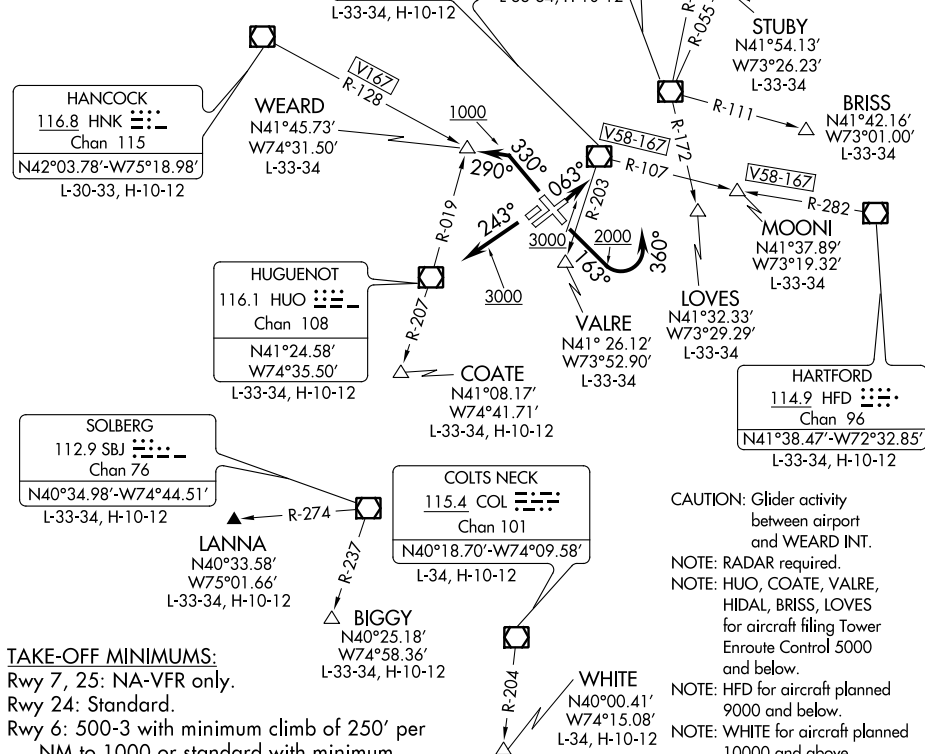
# DUTCHESS EIGHT DEPARTURE

AL-286 (FAA)

POUGHKEEPSIE, NEW YORK

ATIS 126.75  
 GND CON  
 121.8  
 DUTCHESS COUNTY TOWER ★  
 124.0 (CTAF) 269.15  
 NEW YORK DEP CON  
 132.75 363.1

**TOP ALTITUDE:  
 3000**



### TAKE-OFF MINIMUMS:

- Rwy 7, 25: NA-VFR only.
- Rwy 24: Standard.
- Rwy 6: 500-3 with minimum climb of 250' per NM to 1000 or standard with minimum climb of 537' per NM to 800.
- Rwy 15: Standard with minimum climb of 370' per NM to 700.
- Rwy 33: Standard with minimum climb of 270' per NM to 1500.

CAUTION: Glider activity between airport and WEARD INT.  
 NOTE: RADAR required.  
 NOTE: HUG, COATE, VALRE, HIDAL, BRISS, LOVES for aircraft filing Tower Enroute Control 5000 and below.  
 NOTE: HFD for aircraft planned 9000 and below.  
 NOTE: WHITE for aircraft planned 10000 and above.  
 NOTE: Chart not to scale.

### DEPARTURE ROUTE DESCRIPTION

- TAKEOFF RUNWAY 6: Climb heading 063° to 3000, thence. . .
- TAKEOFF RUNWAY 15: Climb heading 163° to 2000, then turn left heading 360°, maintain 3000, thence. . .
- TAKEOFF RUNWAY 24: Climb heading 243° to 3000, thence. . .
- TAKEOFF RUNWAY 33: Climb heading 330° to 1000, then turn left heading 290°, maintain 3000, thence. . .  
 . . . via radar vectors to assigned Route/Fix, expect clearance to filed altitude/flight level within ten (10) minutes after departure.
- LOST COMMUNICATIONS: If radio contact is not established/lost within 2 minutes after departure, proceed on course and climb to 5000. Ten minutes after departure, climb to filed altitude/flight level.

# DUTCHESS EIGHT DEPARTURE

NE-2, 04 NOV 2021 to 02 DEC 2021

NE-2, 04 NOV 2021 to 02 DEC 2021