

LOC I-POU 111.3	APP CRS 063°	Rwy ldg TDZE Apt Elev	5001 156 164
---------------------------	------------------------	-----------------------------	---

ILS or LOC RWY 6

HUDSON VALLEY RGNL (POU)

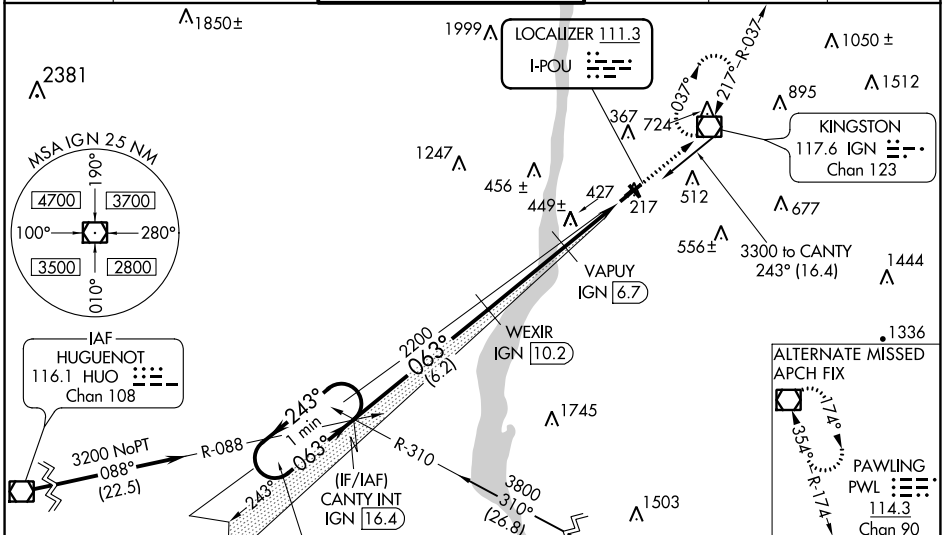
DME required for LOC only.

⚠ Circling NA to Rws 7 and 25. Circling Rwy 15, 33 NA at night. Autopilot coupled approach NA below 580. Rwy 6 helicopter visibility reduction below 3/4 SM NA. DME from IGN VOR/DME. Simultaneous reception of I-POU and IGN DME required. For inop ALS, increase S-LOC 6 Cats C/D visibility to 1 1/2 SM. When local altimeter setting not received, use Montgomery altimeter setting; increase S-ILS 6 DA to 556; increase all MDA 80 feet and S-LOC 6 and Circling Cats C/D visibility 1/4 SM. Inop table does not apply to S-ILS 6 all Cats and S-LOC 6 Cats A/B. For inop ALS when using Montgomery altimeter setting, increase S-ILS 6 all Cats visibility to 1 1/2 SM and S-LOC 6 Cats C/D visibility to 1 1/2 SM.

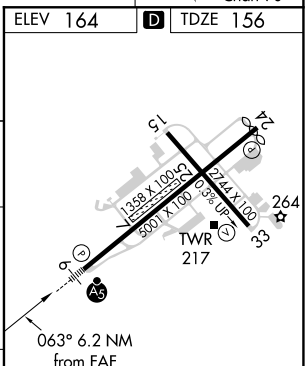
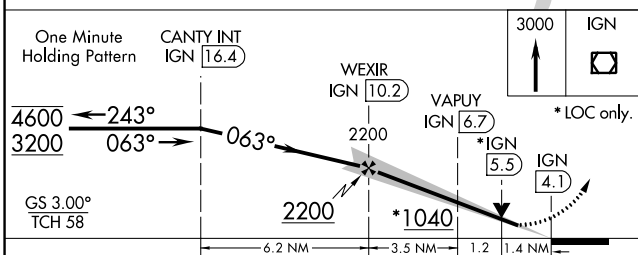
MALS

MISSED APPROACH:
 Climb to 3000 direct IGN VOR/DME and hold, continue climb-in-hold to 3000.

ATIS 126.75	NEW YORK APP CON 132.75 363.1	DUTCHESS COUNTY TOWER ★ 124.0 (CTAF) 269.15	GND CON 121.8	CLNC DEL 121.8	UNICOM 122.95
-----------------------	---	---	-------------------------	--------------------------	-------------------------



ELEV 164	TDZE 156
----------	----------



CATEGORY	A	B	C	D
S-ILS 6		485-1	329 (400-1)	
S-LOC 6		640-1	484 (500-1)	
CIRCLING	760-1 596 (600-1)	840-1 676 (700-1)	840-2 676 (700-2)	840-2 1/4 676 (700-2 1/4)

MIRL Rwy 15-33
 HIRL Rwy 6-24
 REIL Rwy 24
 REIL Rwy 33

NE-2, 04 NOV 2021 to 02 DEC 2021

NE-2, 04 NOV 2021 to 02 DEC 2021