

VOR/DME IGN 117.6 Chan 123	APP CRS 242°	Rwy Idg TDZE 157 Apt Elev 164	4886
--	------------------------	---	-------------

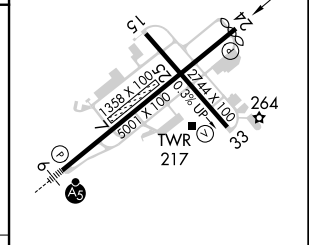
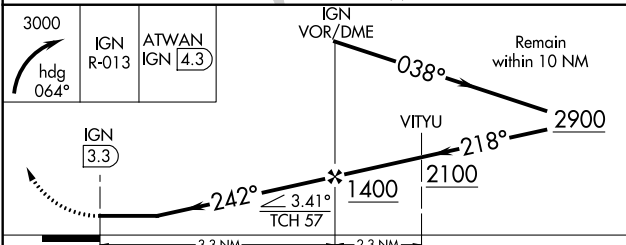
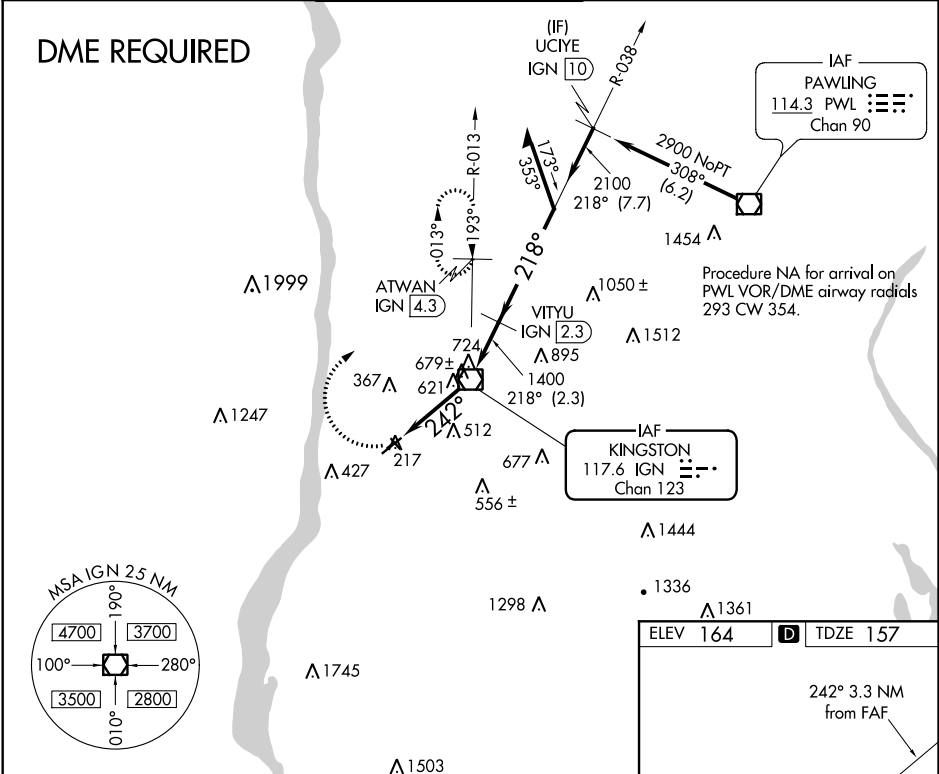
VOR RWY 24

HUDSON VALLEY RGNL (POU)

⚠ Circling NA to Rwy 7 and 25. Circling Rwy 15, 33 NA at night. Rwy 24 helicopter visibility reduction below 3/4 SM NA. Rwy 15, 33 helicopter visibility reduction below 1 NA. DME required. When local altimeter setting not received, use Montgomery altimeter setting and increase all MDA 80 feet, and Circling Cat D visibility 1/4 mile.

MISSED APPROACH: Climbing right turn to 3000 on heading 064° and IGN VOR/DME R-013 to ATWAN/4.3 DME and hold, continue climb-in-hold to 3000.

ATIS 126.75	NEW YORK APP CON 132.75 363.1	DUTCHESS COUNTY TOWER * 124.0 (CTAF) 0 269.15	GND CON 121.8	CLNC DEL 121.8	UNICOM 122.95
-----------------------	---	---	-------------------------	--------------------------	-------------------------



CATEGORY	A	B	C	D
S-24	940-1 783 (800-1)	940-1 1/4 783 (800-1 1/4)	940-2 1/2	783 (800-2 1/2)
CIRCLING	940-1 776 (800-1)	940-1 1/4 776 (800-1 1/4)	940-2 1/2	776 (800-2 1/2)

MRL Rwy 15-33
 HIRL Rwy 6-24
 REIL Rwy 24
 REIL Rwy 33

NE-2, 04 NOV 2021 to 02 DEC 2021

NE-2, 04 NOV 2021 to 02 DEC 2021