

HI-ILS or LOC/DME RWY 25

LOC I-PMD 110.7	APCH CRS 254°	Rwy Idg 12,002 TDZE 2503 Arprt Elev 2543
---------------------------	-------------------------	--

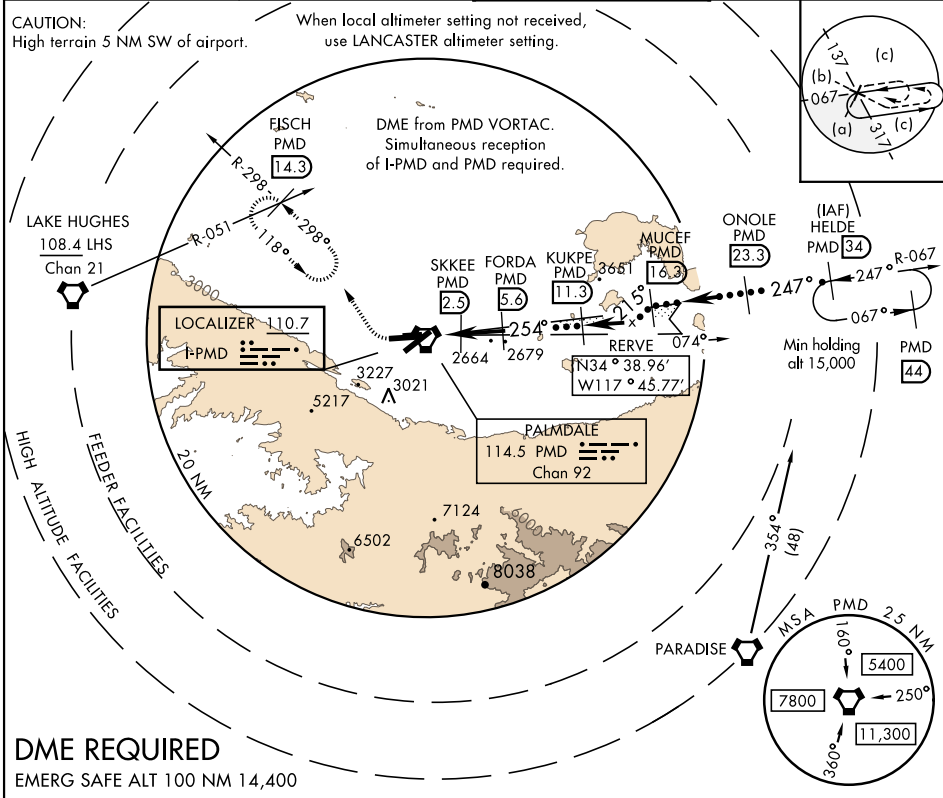
JAL-310 [USAF]

PALMDALE USAF PLANT 42 (KPMD)

⚠ * Circling NA south of Rws 4 and 25.
⚠

MISSED APPROACH: Climb to 3000 then climbing right turn on heading 318° and PMD VORTAC R-298 to FISCH INT/PMD 14.3 DME/RADAR and hold, continue climb-in-hold to 6700.

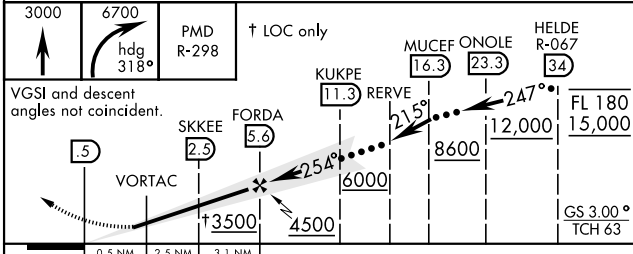
ATIS 118.275	JOSHUA APP CON 124.55 363.0	PALMDALE TOWER * 123.7 (CTAF) 0 317.6	GND CON 121.9 348.6
------------------------	---------------------------------------	---	-------------------------------



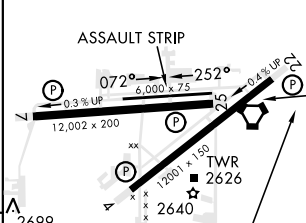
SW-3, 04 NOV 2021 to 02 DEC 2021

SW-3, 04 NOV 2021 to 02 DEC 2021

DME REQUIRED
EMERG SAFE ALT 100 NM 14,400



ELEV 2543	TDZE 2503
-----------	-----------



CATEGORY	C	D	E
S-ILS 25		2703-¾	200 (200-¾)
S-LOC 25		2820-7/8	317 (300-7/8)
CIRCLING *	3140-1½ 597 (600-1½)	3740-3 1197 (1200-3)	3760-3 1217 (1300-3)

REIL Rwy 4-22, 7-25	254° 6.1 NM from FAF
HIRL Rwy 4-22, 7-25	
FAF to MAP 6.1 NM	
Knots	60 90 120 150 180
Min:Sec	6:06 4:04 3:03 2:26 2:02

HI-ILS or LOC/DME RWY 25