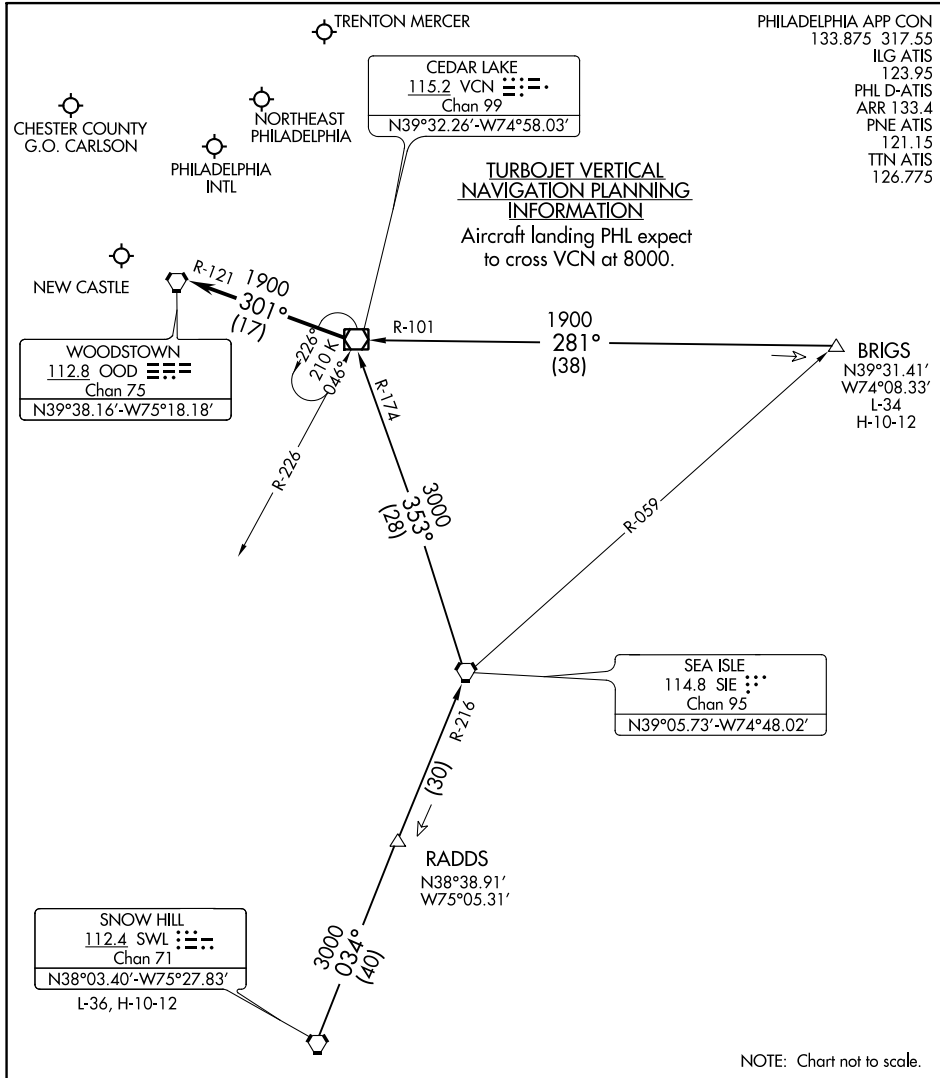


CEDAR LAKE NINE ARRIVAL

PHILADELPHIA, PENNSYLVANIA



PHILADELPHIA APP CON
 133.875 317.55
 ILG ATIS
 123.95
 PHL D-ATIS
 ARR 133.4
 PNE ATIS
 121.15
 TTN ATIS
 126.775

**TURBOJET VERTICAL
 NAVIGATION PLANNING
 INFORMATION**
 Aircraft landing PHL expect
 to cross VCN at 8000.

NE-4, 04 NOV 2021 to 02 DEC 2021

NE-4, 04 NOV 2021 to 02 DEC 2021

BRIGS TRANSITION (BRIGS.VCN9): From over BRIGS on VCN R-101 to VCN VOR/DME. Thence. . . .

SNOW HILL TRANSITION (SWL.VCN9): From over SWL VORTAC on SWL R-034 and SIE R-216 to SIE VORTAC, then on SIE R-353 and VCN R-174 to VCN VOR/DME. Thence. . . .

. . . . from over VCN VOR/DME: Turbojets expect RADAR vectors to final approach course. Non-Turbojets continue on the VCN R-301 and the OOD R-121 to OOD VORTAC; expect RADAR vectors to final approach course.

NOTE: Chart not to scale.

CEDAR LAKE NINE ARRIVAL

(VCN.VCN9) 07DEC17

PHILADELPHIA, PENNSYLVANIA