

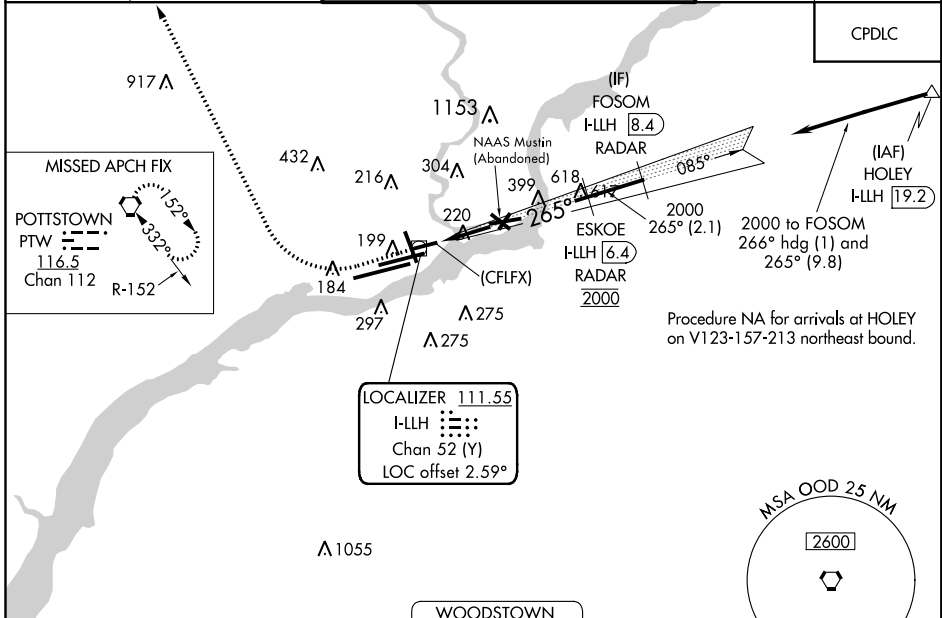
LOC/DME I-LLH 111.55	APP CRS 265°	Rwy Idg TDZE Apt Elev	5001 36 36
Chan 52 (Y)			

ILS or LOC RWY 26

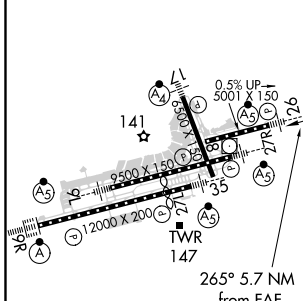
PHILADELPHIA INTL (PHL)

DME or RADAR required.		MALSR	MISSED APPROACH: Climb to 800 then climbing right turn to 3000 direct PTW VORTAC and hold.
<p>▼ For inop ALS, increase S-ILS all Cats visibility to RVR 4500 and S-LOC Cats A and B visibility to RVR 5500 and Cat C to 1 1/8 SM. Rwy 26 helicopter visibility reduction below RVR 4000 NA.</p>			

D-ATIS ARR 133.4 DEP 135.925	PHILADELPHIA APP CON 124.35 319.15	PHILADELPHIA TOWER 118.5 327.05 (Rwys 9L/27R, 8/26 and 17/35) 135.1 327.05 (Rwy 9R/27L)	GND CON 121.9 348.6	CLNC DEL 118.85 348.6
--	--	---	-------------------------------	---------------------------------



ELEV 36	D	TDZE 36
---------	----------	---------



TDZ/CL Rwy 9R HIRL all Rwys REIL Rwys 9L and 35					
FAF to MAP 5.7 NM					
Knots	60	90	120	150	180
Min:Sec	5:42	3:48	2:51	2:17	1:54

800	3000	PTW
*LOC only.		
*I-LLH 2.5		
(CFLFX) I-LLH 0.6		
ESKOE I-LLH 6.4 RADAR		
FOSOM I-LLH 8.4 RADAR		
2000		
265°		
2000		
GS 3.15° TCH 50		
1.8 NM		
3.9 NM		
2.1 NM		

CATEGORY	A	B	C	D
S-ILS 26	299/40 263 (300-3/4)			NA
S-LOC 26	700/40	664 (700-3/4)	700-1 1/2 664 (700-1 1/2)	NA
C CIRCLING	700-1	664 (700-1)	700-1 7/8 664 (700-1 7/8)	NA

NE-4, 04 NOV 2021 to 02 DEC 2021

NE-4, 04 NOV 2021 to 02 DEC 2021