

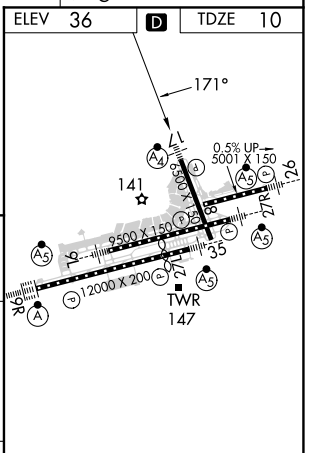
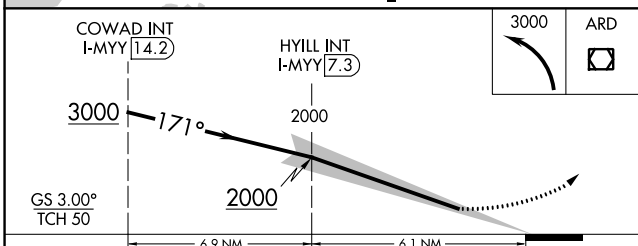
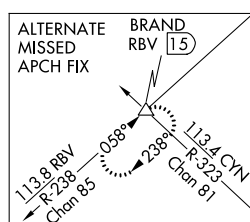
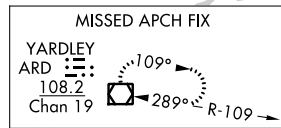
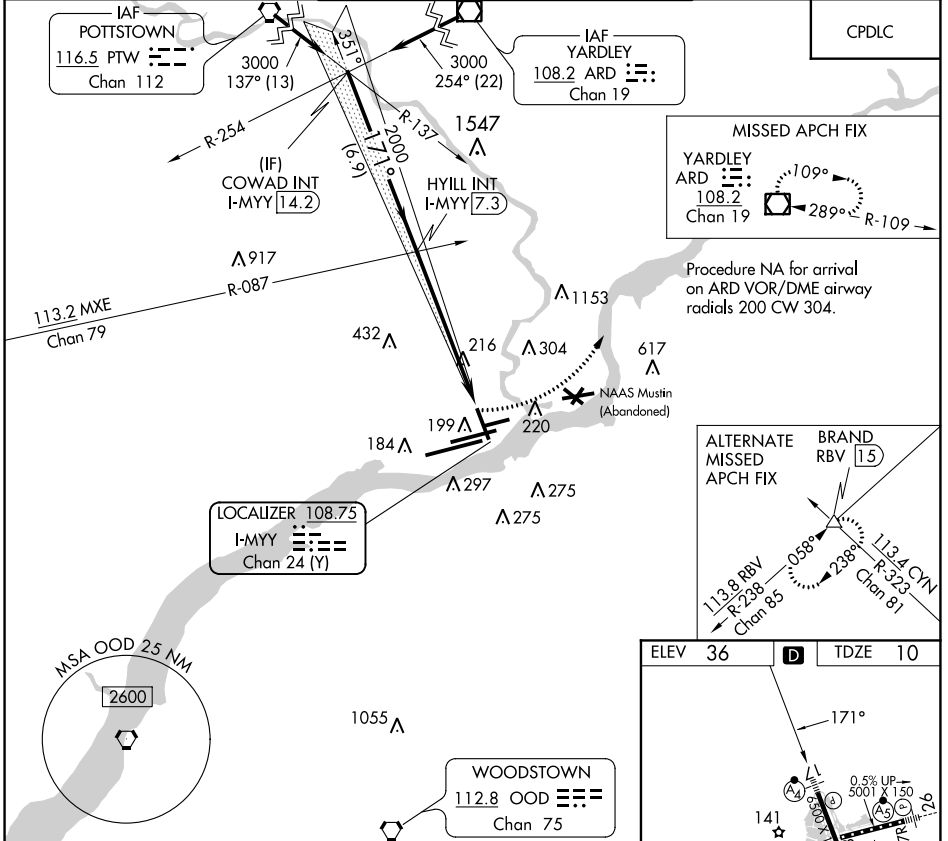
LOC/DME I-MYY 108.75 Chan 24 (Y)	APP CRS 171°	Rwy Idg TDZE Apt Elev	6500 10 36
--	------------------------	-----------------------------	---------------------------------------

ILS V RWY 17 (CONVERGING)

PHILADELPHIA INTL (PHL)

RADAR required.	MALSF	MISSED APPROACH: Climbing left turn to 3000 direct ARD VOR/DME and hold.
Simultaneous approach authorized. Rwy 17 helicopter visibility reduction below 3/4 SM NA.		

D-ATIS ARR 133.4 DEP 135.925	PHILADELPHIA APP CON 124.35 319.15	PHILADELPHIA TOWER 118.5 327.05 (Rwys 9L/27R, 8/26 and 17/35) 135.1 327.05 (Rwy 9R/27L)	GND CON 121.9 348.6	CLNC DEL 118.85 348.6
--	--	---	-------------------------------	---------------------------------



CATEGORY	A	B	C	D
S-ILS 17		410/45	400 (400-3/4)	

TDZ/CL Rwy 9R
HIRL all Rwys
REIL Rwys 9L and 35

NE-4, 04 NOV 2021 to 02 DEC 2021

NE-4, 04 NOV 2021 to 02 DEC 2021