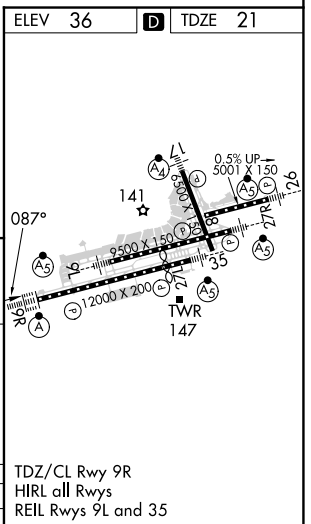
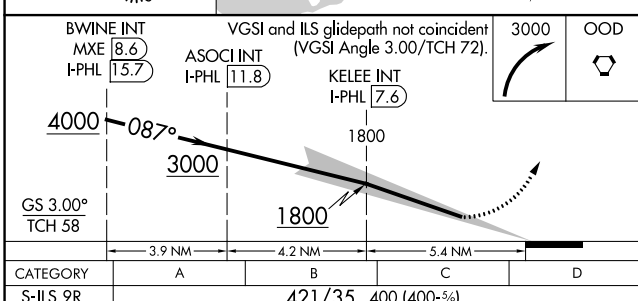
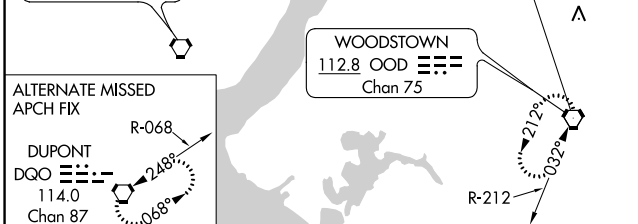
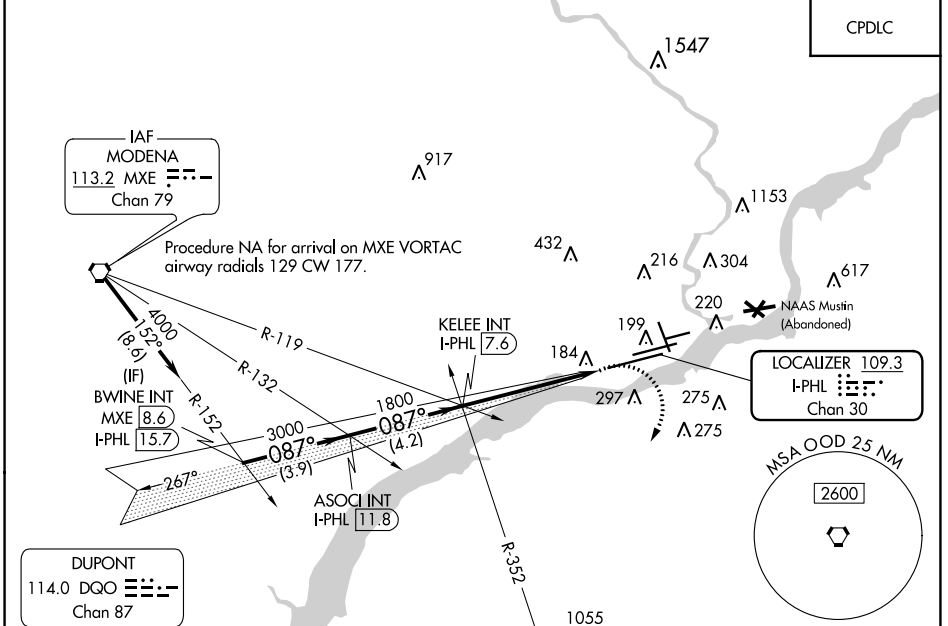


LOC/DME I-PHL 109.3 Chan 30	APP CRS 087°	Rwy Idg 12000 TDZE 21 Apt Elev 36
---	------------------------	--

ILS V RWY 9R (CONVERGING)

PHILADELPHIA INTL (PHL)

RADAR required.		ALSIF-2	MISSED APPROACH: Climbing right turn to 3000 direct OOD VORTAC and hold.	
<p>Simultaneous approach authorized. For inop ALS, increase S-ILS 9R all Cats visibility to RVR 6000.</p>				
D-ATIS ARR 133.4 DEP 135.925	PHILADELPHIA APP CON 124.35 319.15	PHILADELPHIA TOWER 118.5 327.05 (Rwys 9L/27R, 8/26 and 17/35) 135.1 327.05 (Rwy 9R/27L)	GND CON 121.9 348.6	CLNC DEL 118.85 348.6



PHILADELPHIA, PENNSYLVANIA	39°52'N-75°14'W	PHILADELPHIA INTL (PHL)
Amdt 6 19JUL18		ILS V RWY 9R (CONVERGING)

NE-4, 04 NOV 2021 to 02 DEC 2021

NE-4, 04 NOV 2021 to 02 DEC 2021