

ILS Z or LOC RWY 17

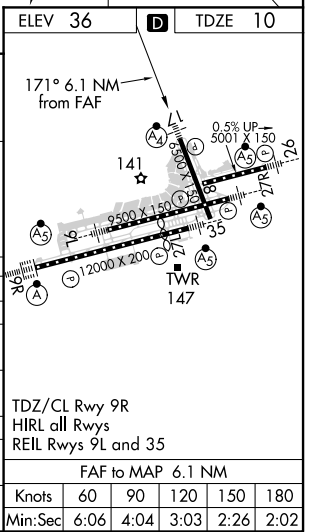
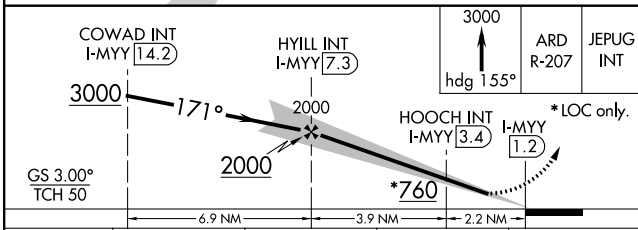
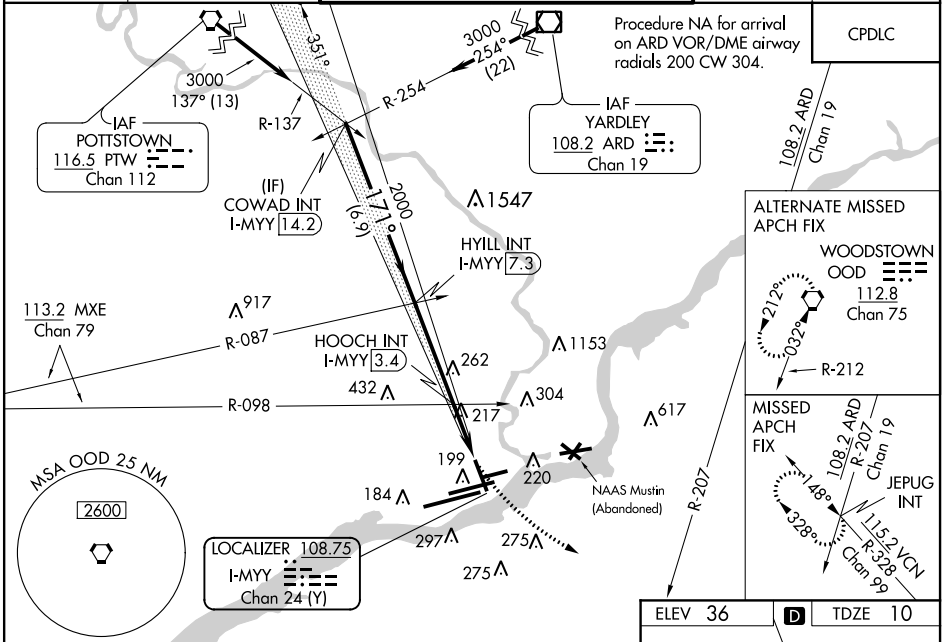
PHILADELPHIA INTL (PHL)

| | | |
|---|------------------------|---|
| LOC/DME I-MYY 108.75 Chan 24 (Y) | APP CRS 171° | Rwy Idg 6500 TDZE 10 Apt Elev 36 |
|---|------------------------|---|

⚠ Inop table does not apply to S-ILS 17 all Cats and S-LOC 17 Cat A. For inop ALS, increase S-LOC 17 Cat C visibility to 2 SM. HOOCH fix minimums: inop table does not apply to Cats A/B. Rwy 17 helicopter visibility reduction below RVR 5000 NA.

MALSIF
MISSED APPROACH: Climb to 3000 on heading 155° and ARD VOR/DME R-207 to JEPUG INT and hold.

| | | | | |
|--|--|---|-------------------------------|---------------------------------|
| D-ATIS ARR 133.4 DEP 135.925 | PHILADELPHIA APP CON 124.35 319.15 | PHILADELPHIA TOWER 118.5 327.05 (Rwys 9L/27R, 8/26 and 17/35) 135.1 327.05 (Rwy 9R/27L) | GND CON 121.9 348.6 | CLNC DEL 118.85 348.6 |
|--|--|---|-------------------------------|---------------------------------|



| CATEGORY | A | B | C | D |
|--------------------|-----------------------|------------------------------|------------------------------|------------------------------|
| S-ILS 17 | | 260/50 | 250 (300-1) | |
| S-LOC 17 | 760/50 750 (800-1) | 760/55 750 (800-1) | 760-1 7/8 750 (800-1 7/8) | 760-2 1/4 750 (800-2 1/4) |
| CIRCLING | 760-1 724 (800-1) | 760-1 1/4 724 (800-1 1/4) | 760-2 724 (800-2) | 760-2 1/4 724 (800-2 1/4) |
| HOOCH FIX MINIMUMS | | | | |
| S-LOC 17 | 480/50 | 470 (500-1) | 480/60 | 470 (500-1 1/4) |
| CIRCLING | 540-1 504 (600-1) | 600-1 564 (600-1) | 620-1 1/2 584 (600-1 1/2) | 720-2 1/4 684 (700-2 1/4) |

TDZ/CL Rwy 9R
HIRL all Rwys
REIL Rwys 9L and 35

FAF to MAP 6.1 NM

| | | | | | |
|---------|------|------|------|------|------|
| Knots | 60 | 90 | 120 | 150 | 180 |
| Min:Sec | 6:06 | 4:04 | 3:03 | 2:26 | 2:02 |

NE-4, 04 NOV 2021 to 02 DEC 2021

NE-4, 04 NOV 2021 to 02 DEC 2021