

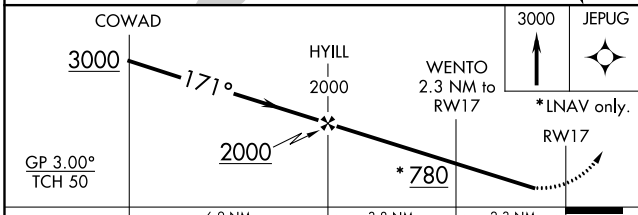
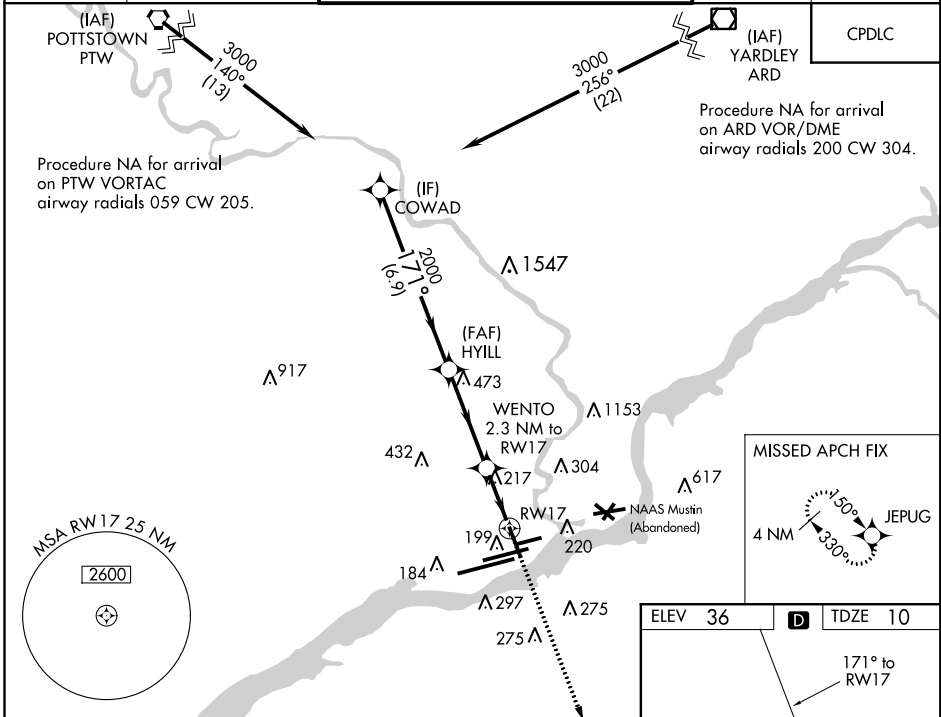
WAAS CH 86222 W17A	APP CRS 171°	Rwy Idg TDZE 10 Apt Elev 36	6500
--	------------------------	---	-------------

RNAV (GPS) RWY 17

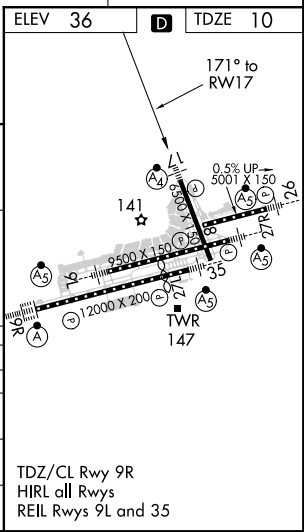
PHILADELPHIA INTL (PHL)

<p>⚠ Inop table does not apply to LPV and LNAV/VNAV all Cats and LNAV Cats A/B. For uncompensated Baro-VNAV systems, LNAV/VNAV NA below -12°C (11°F) or above 54°C (130°F). DME/DME RNP-0.3 NA. Rwy 17 helicopter visibility reduction below RVR 5000 NA.</p>	<p>MAISF = </p>	<p>MISSED APPROACH: Climb to 3000 direct JEPUG and hold.</p>

D-ATIS ARR 133.4 DEP 135.925	PHILADELPHIA APP CON 124.35 319.15	PHILADELPHIA TOWER 118.5 327.05 (Rwys 9L/27R, 8/26 and 17/35) 135.1 327.05 (Rwy 9R/27L)	GND CON 121.9 348.6	CLNC DEL 118.85 348.6
--	--	---	-------------------------------	---------------------------------



CATEGORY	A	B	C	D
LPV DA		260/50	250 (300-1)	
LNAV/VNAV DA		301/50	291 (300-1)	
LNAV MDA	480/50	470 (500-1)	480/60	470 (500-1½)
CIRCLING	540-1 504 (600-1)	600-1 564 (600-1)	620-1½ 584 (600-1½)	720-2¼ 684 (700-2¼)



NE-4, 04 NOV 2021 to 02 DEC 2021

NE-4, 04 NOV 2021 to 02 DEC 2021

TDZ/CL Rwy 9R
HIRL all Rwys
REIL Rwys 9L and 35