


WAAS CH <b>97322</b> <b>W27A</b>	APP CRS <b>268°</b>	Rwy Idg TDZE <b>10</b> Apt Elev <b>36</b>	<b>9912</b>
--	------------------------	---	-------------

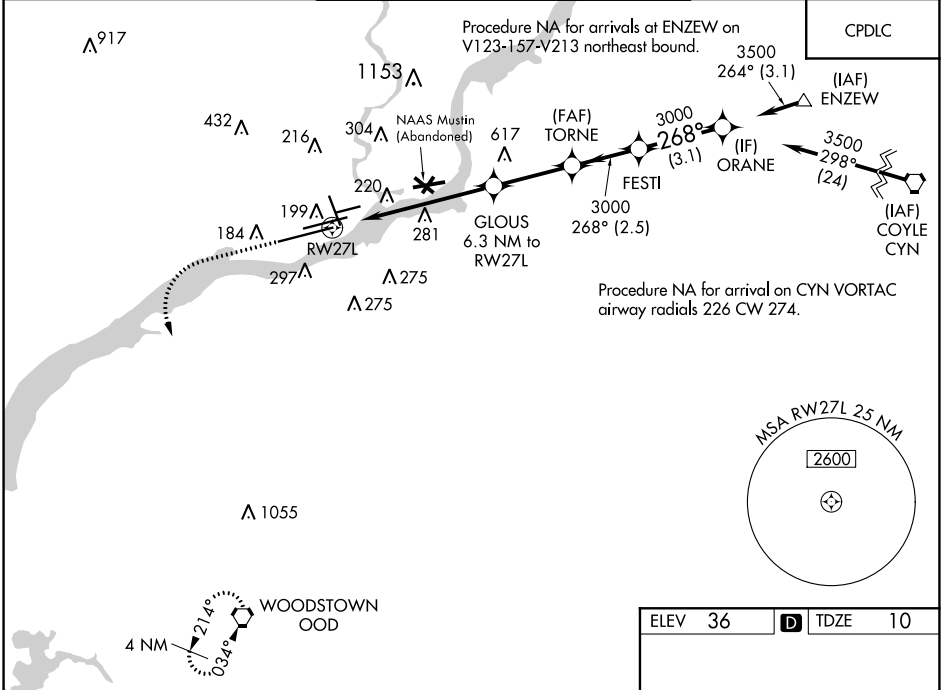
# RNAV (GPS) RWY 27L

PHILADELPHIA INTL (PHL)

**⚠** For uncompensated Baro-VNAV systems, LNAV/VNAV NA below -12°C (11°F) or above 54°C (130°F). Simultaneous approach authorized. Use of FD or AP providing RNAV track guidance required during simultaneous operations. LNAV procedure NA during simultaneous operations. DME/DME RNP-0.3 NA. For inoperative ALS, increase LNAV/VNAV all Cats visibility to RVR 6000.

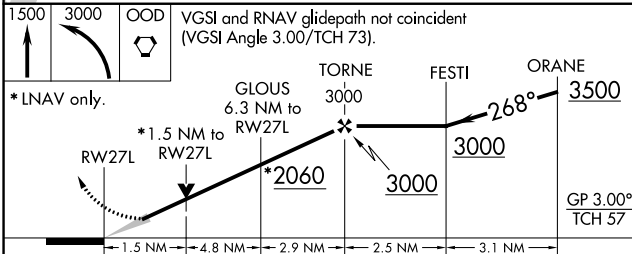
**MALSR**  
 MISSED APPROACH: Climb to 1500 then climbing left turn to 3000 direct OOD VORTAC and hold.

D-ATIS ARR <b>133.4</b> DEP <b>135.925</b>	PHILADELPHIA APP CON <b>124.35 319.15</b>	PHILADELPHIA TOWER <b>118.5 327.05</b> (Rwys 9L/27R, 8/26 and 17/35) <b>135.1 327.05</b> (Rwy 9R/27L)	GND CON <b>121.9 348.6</b>	CLNC DEL <b>118.85 348.6</b>
--	--	--	-------------------------------	---------------------------------

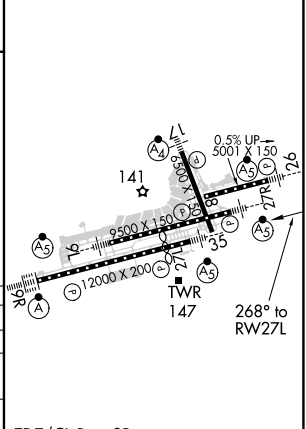


NE-4, 04 NOV 2021 to 02 DEC 2021

NE-4, 04 NOV 2021 to 02 DEC 2021



ELEV 36	<b>D</b> TDZE 10
---------	------------------



CATEGORY	A	B	C	D
LPV DA		260/24	250 (300-1/2)	
LNAV/DA VNAV		423/45	413 (400-7/8)	
LNAV MDA	560/24	550 (600-1/2)	560/60	550 (600-1 1/4)
<b>C</b> CIRCLING	560-1 524 (600-1)	600-1 564 (600-1)	620-1 1/2 584 (600-1 1/2)	720-2 1/4 684 (700-2 1/4)

TDZ/CL Rwy 9R  
HIRL all Rwys  
REIL Rwys 9L and 35