

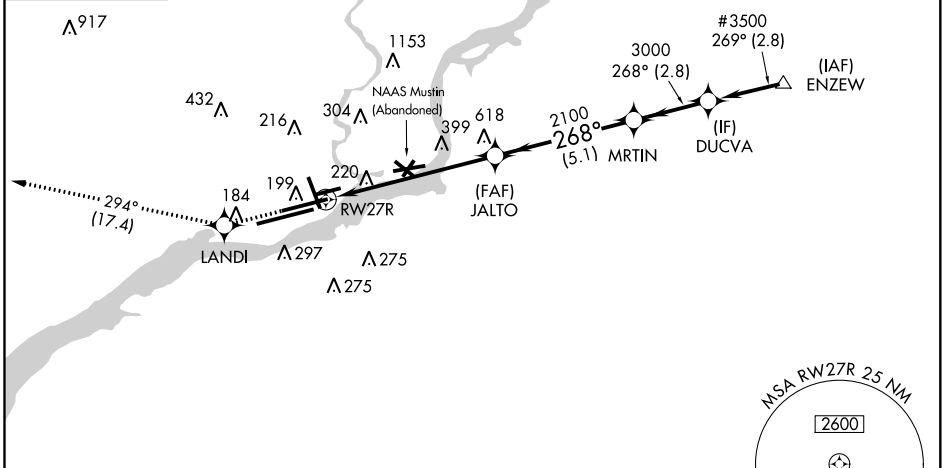
WAAS CH 90122	APP CRS 268°	Rwy Idg TDZE 11	8864
W27B		Apt Elev 36	

RNAV (GPS) RWY 27R

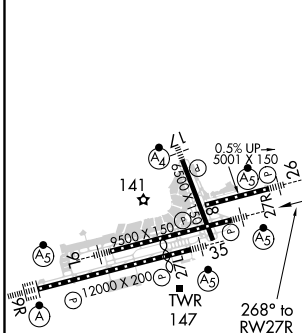
PHILADELPHIA INTL (PHL)

For uncompensated Baro-VNAV systems, LNAV/VNAV NA below -12°C (11°F) or above 54°C (130°F). DME/DME RNP-0.3 NA. For inop ALS, increase LNAV/VNAV all Cats visibility to 1 3/8 SM and LNAV Cat C/D to 2 SM.		MALS R	MISSED APPROACH: Climb to 3000 direct LANDI and on track 294° to MXE VORTAC and hold.
D-ATIS ARR 133.4 DEP 135.925	PHILADELPHIA APP CON 124.35 319.15	PHILADELPHIA TOWER 118.5 327.05 (Rwys 9L/27R, 8/26 and 17/35) 135.1 327.05 (Rwy 9R/27L)	GND CON 121.9 348.6
			CLNC DEL 118.85 348.6

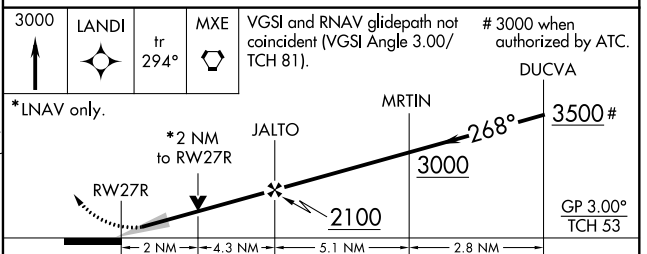
MISSED APCH FIX MODENA MXE 	CPDLC
--------------------------------------	-------



ELEV 36	D	TDZE 11
---------	----------	---------



TDZ/CL Rwy 9R HIRL all Rwys REIL Rwys 9L and 35



CATEGORY	A	B	C	D
LPV DA		267/24 256 (300-1/2)		
LNAV/VNAV DA		520/60 509 (500-1 1/4)		
LNAV MDA	720/24	709 (700-1/2)	720-1 1/2 709 (700-1 1/2)	720-1 3/4 709 (700-1 3/4)
CIRCLING	720-1	684 (700-1)	720-2 684 (700-2)	720-2 1/4 684 (700-2 1/4)

NE-4, 04 NOV 2021 to 02 DEC 2021

NE-4, 04 NOV 2021 to 02 DEC 2021