


APP CRS	Rwy Idg	<b>9500</b>
<b>087°</b>	TDZE	<b>13</b>
	Apt Elev	<b>36</b>

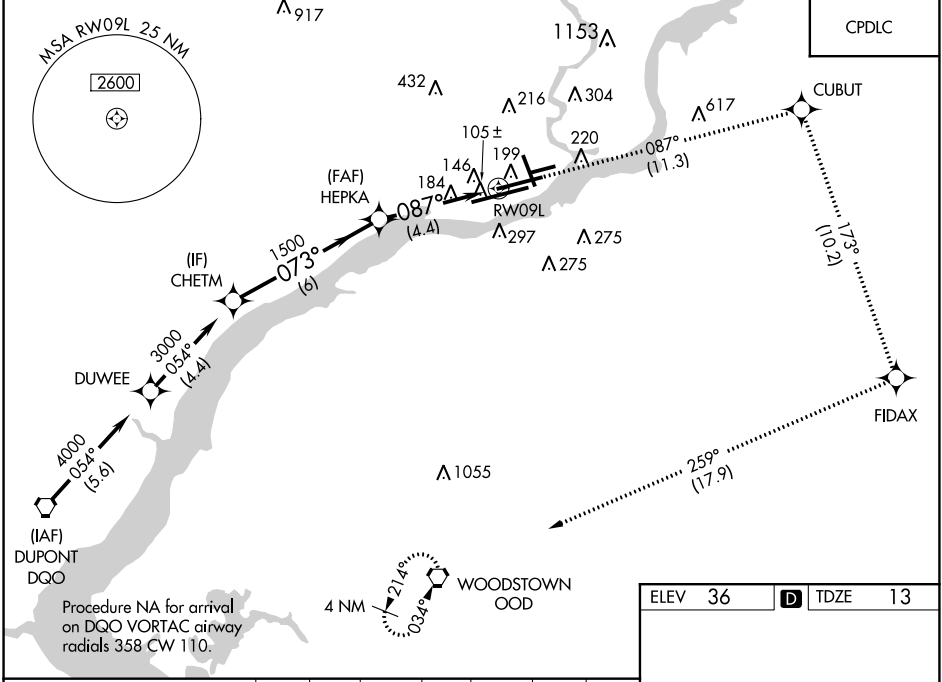
# RNAV (RNP) Z RWY 9L

PHILADELPHIA INTL (PHL)

**▼** For uncompensated Baro-VNAV systems, procedure NA below -12°C (10°F) or above 54°C (130°F). GPS required.  
For inop ALS, increase RNP 0.11 visibility all Cats to RVR 6000 and RNP 0.30 visibility all Cats to 1½ SM.

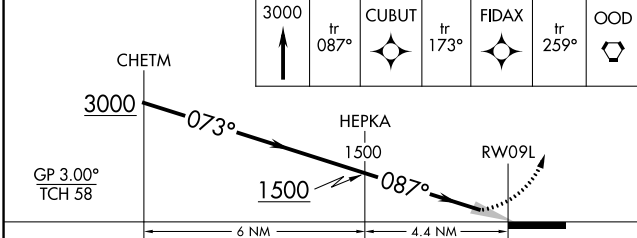
**MALSR**  
 MISSED APPROACH: Climb to 3000 on track 087° to CUBUT and on track 173° to FIDAX and on track 259° to OOD VORTAC and hold.

D-ATIS	PHILADELPHIA APP CON	PHILADELPHIA TOWER	GND CON	CLNC DEL
ARR <b>133.4</b>	<b>124.35 319.15</b>	<b>118.5 327.05</b> (Rwys 9L/27R, 8/26 and 17/35) <b>135.1 327.05</b> (Rwy 9R/27L)	<b>121.9 348.6</b>	<b>118.85 348.6</b>
DEP <b>135.925</b>				

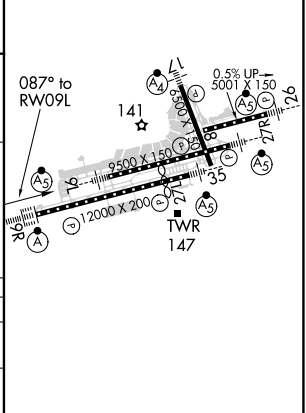


NE-4, 04 NOV 2021 to 02 DEC 2021

NE-4, 04 NOV 2021 to 02 DEC 2021



ELEV 36	<b>D</b> TDZE 13
---------	------------------



CATEGORY	A	B	C	D
RNP 0.11 DA		382/35	369 (400-%)	
RNP 0.30 DA		434/45	421 (400-%)	

**AUTHORIZATION REQUIRED**

TDZ/CL Rwy 9R  
HIRL all Rwys  
REIL Rwys 9L and 35