

APP CRS	Rwy Idg	12000
087°	TDZE	21
	Apt Elev	36

RNAV (RNP) Z RWY 9R

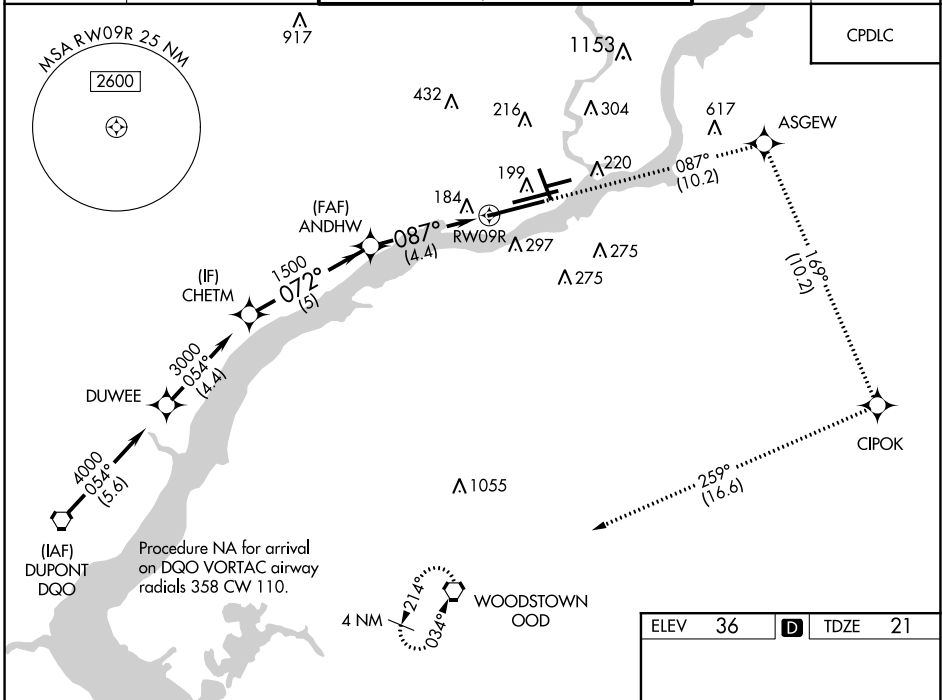
PHILADELPHIA INTL (PHL)

▼ For uncompensated Baro-VNAV systems, procedure NA below -12°C (10°F) or above 54°C (130°F). For inop ALS, increase RNP 0.16 all Cats visibility to RVR 4500 and RNP 0.30 all Cats visibility to 1 1/2 SM. Rwy 9R helicopter visibility reduction below RVR 4000 NA.



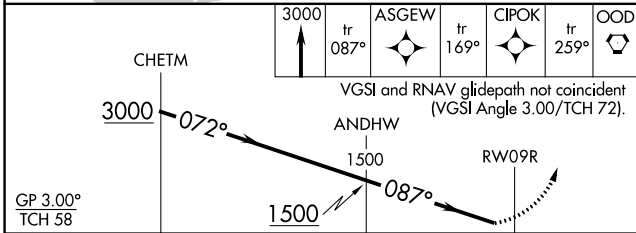
MISSED APPROACH: Climb to 3000 on track 087° to ASGEW and on track 169° to CIPOK, and on track 259° to OOD VORTAC and hold.

D-ATIS	PHILADELPHIA APP CON	PHILADELPHIA TOWER	GND CON	CLNC DEL
ARR 133.4	124.35 319.15	(Rwys 9L/27R, 8/26 and 17/35)	121.9 348.6	118.85 348.6
DEP 135.925		135.1 327.05 (Rwy 9R/27L)		



NE-4, 04 NOV 2021 to 02 DEC 2021

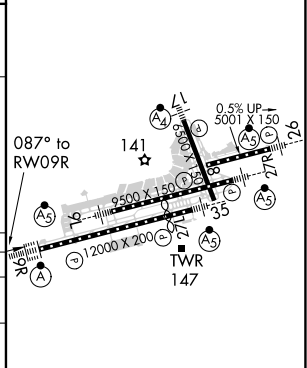
NE-4, 04 NOV 2021 to 02 DEC 2021



ELEV	36	D	TDZE	21
------	----	----------	------	----

GP 3.00°	TCH 58
----------	--------

CATEGORY	A	B	C	D
RNP 0.16 DA		284/40	263 (300-¾)	
RNP 0.30 DA		460/50	439 (500-1)	



AUTHORIZATION REQUIRED

TDZ/CL Rwy 9R
HIRL all Rwys
REIL Rwys 9L and 35