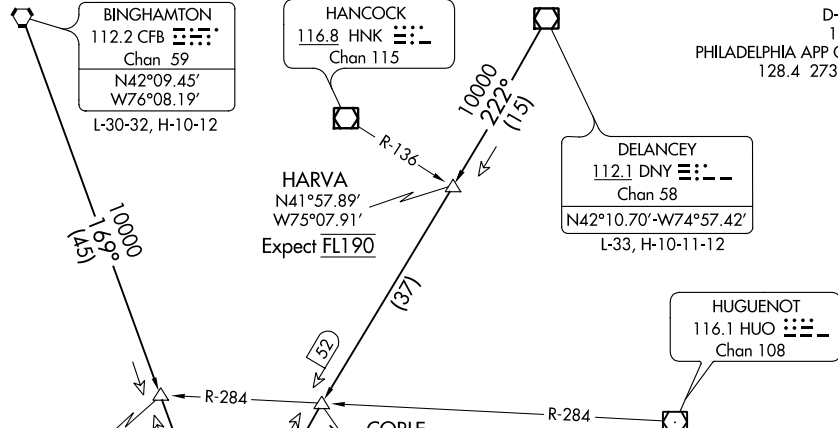


# SLATT FOUR ARRIVAL

D-ATIS  
133.4  
PHILADELPHIA APP CON  
128.4 273.575



**ARRIVAL ROUTE DESCRIPTION**

**BINGHAMTON TRANSITION (CFB.SLATT4):** From over CFB VORTAC on CFB R-169 to LECOR INT, then on LVZ R-349 to LVZ VORTAC. Thence. . .

**DELANCEY TRANSITION (DNY.SLATT4):** From over DNY VOR/DME on DNY R-222 to CORLE INT, then on LVZ R-041 to LVZ VORTAC. Thence. . .

. . . from over LVZ VORTAC on LVZ R-190 and ETX R-009 to SLATT INT, then on ETX R-009 to ETX VOR/DME, then on ETX R-133 to SPUDS INT. Expect RADAR vectors to final approach course.

**WILKES-BARRE**  
111.6 LVZ  
Chan 53  
N41°16.37'-W75°41.37'

**ALLENTOWN**  
117.5 FJC  
Chan 122

**SPUDS**  
N40°27.08'  
W75°25.98'  
Expect 10000  
and 250K

**EAST TEXAS**  
110.2 ETX  
Chan 39  
N40°34.86'-W75°41.04'

**POTTSTOWN**  
116.5 PTW  
Chan 112

NOTE: RADAR required.  
NOTE: This STAR is for turbojet aircraft only.  
NOTE: CAUTION: Parachute Jumping 7 NM SE SPUDS, 1.5 NM radius Pennridge Airport, AOB 14,500 (SR-SS)

PENNRIDGE

NOTE: Chart not to scale.

NE-4, 04 NOV 2021 to 02 DEC 2021

NE-4, 04 NOV 2021 to 02 DEC 2021

# SLATT FOUR ARRIVAL