

WAAS CH 62900 W10A	APP CRS 097°	Rwy Idg TDZE Apt Elev	5801 4661 4697
--	------------------------	-----------------------------	---

RNAV (GPS) RWY 10

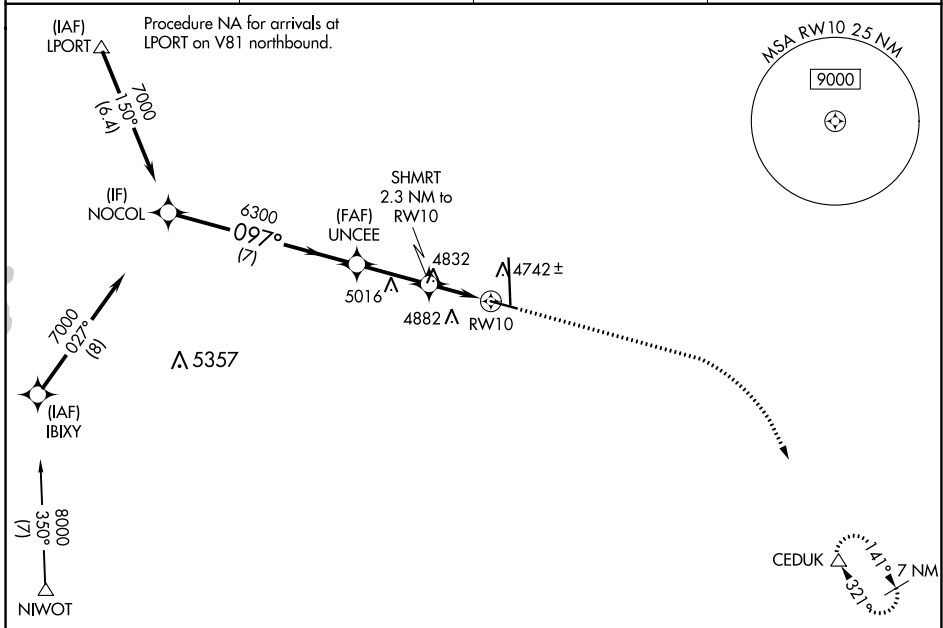
GREELEY-WELD COUNTY (GXY)

RNP APCH.

▼ For uncompensated Baro-VNAV systems, LNAV/VNAV NA below -24°C or above 54°C.
▲

MISSED APPROACH: Climb to 5400 then climbing right turn to 7000 direct CEDUK and hold.

AWOS-3PT 135.175	DENVER APP CON 134.85 251.125	CLNC DEL 126.65	UNICOM 122.8 (CTAF) 0
----------------------------	---	---------------------------	---------------------------------



SW-1, 04 NOV 2021 to 02 DEC 2021

SW-1, 04 NOV 2021 to 02 DEC 2021

Procedure NA for arrivals at NIWOT on V575 southeast bound and V220 southwest bound.

VGSI and RNAV glidepath not coincident NOCOL (VGSI Angle 3.00/TCH 43).		5400	7000	CEDUK
7000		UNCEE	SHMRT 2.3 NM to RW10	*LNAV only
GP 3.00° TCH 50		6300	*1.4 NM to RW10	
7 NM		2.7 NM	0.9 NM	1.4 NM
CATEGORY	A	B	C	D
LPV DA		4911-3/4	250 (300-3/4)	
LNAV/VNAV DA		4920-3/4	259 (300-3/4)	
LNAV MDA	5140-1	479 (500-1)	5140-1 3/8	479 (500-1 3/8)
CIRCLING	5140-1 443 (500-1)	5200-1 503 (600-1)	5200-1 1/2 503 (600-1 1/2)	5380-2 1/4 683 (700-2 1/4)

