

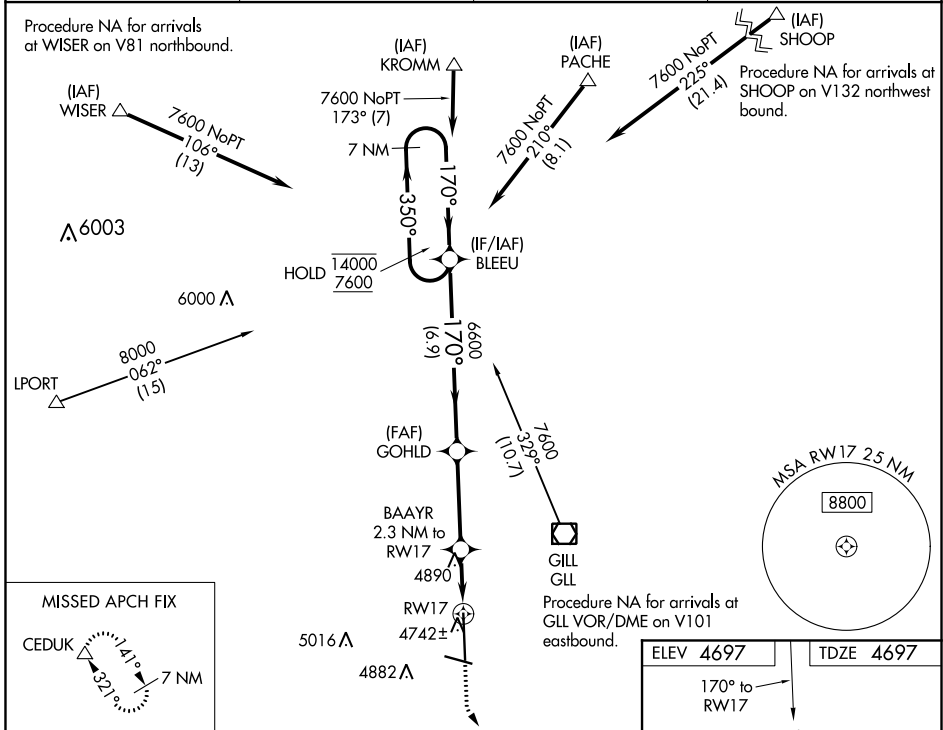
WAAS CH 72708 W17A	APP CRS 170°	Rwy Idg TDZE Apt Elev	10000 4697 4697
---------------------------------	------------------------	-----------------------------	--

RNAV (GPS) RWY 17

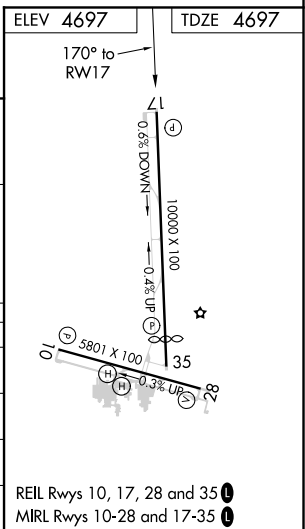
GREELEY-WELD COUNTY (GXY)

RNP APCH. ▼ For uncompensated Baro-VNAV systems, LNAV/VNAV NA below -24°C or above 54°C. ▲	MISSED APPROACH: Climb to 5400 then climbing left turn to 7000 direct CEDUK and hold.
--	---

AWOS-3PT 135.175	DENVER APP CON 134.85 251.125	CLNC DEL 126.65	UNICOM 122.8 (CTAF)
----------------------------	---	---------------------------	-------------------------------



7 NM Holding Pattern	BLEEU	GOHLD	BAAAYR 2.3 NM to RW17	5400	7000	CEDUK
	14000 7600	6600	*1.2 NM to RW17	↑	↶	△
GP 3.00° TCH 46	← 350°	170° →	6600	*NAV only		
	6.9 NM	3.5 NM	1.1 NM	1.2 NM	RW17	
CATEGORY	A	B	C	D		
LPV DA		4897-3/4	200 (200-3/4)			
LNAV/VNAV DA		4969-7/8	272 (300-7/8)			
LNAV MDA	5140-1	443 (500-1)	5140-1 1/2 443 (500-1 1/2)	5140-2 1/4 443 (500-2 1/4)		
CIRCLING	5140-1 443 (500-1)	5200-1 503 (600-1)	5200-1 1/2 503 (600-1 1/2)	5380-2 1/4 683 (700-2 1/4)		



SW-1, 04 NOV 2021 to 02 DEC 2021

SW-1, 04 NOV 2021 to 02 DEC 2021