

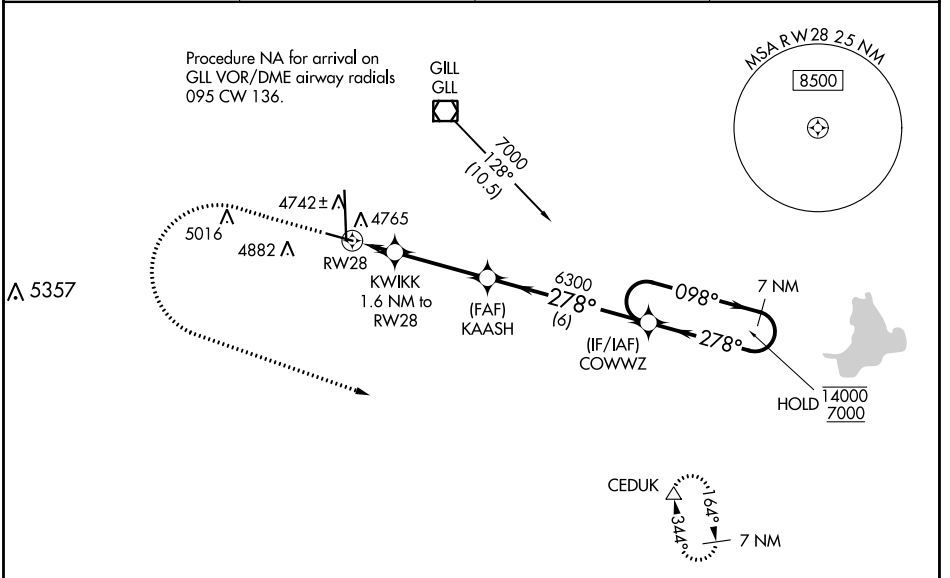
WAAS CH 86808 W28A	APP CRS 278°	Rwy Idg TDZE Apt Elev	5801 4650 4697
--	------------------------	-----------------------------	---

RNAV (GPS) RWY 28

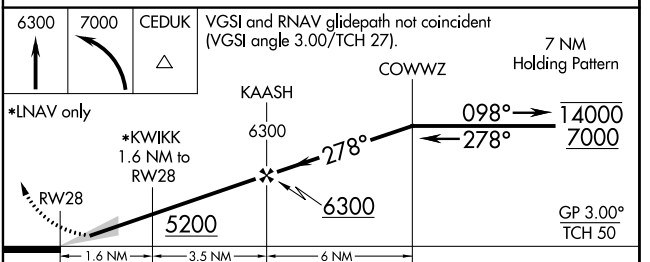
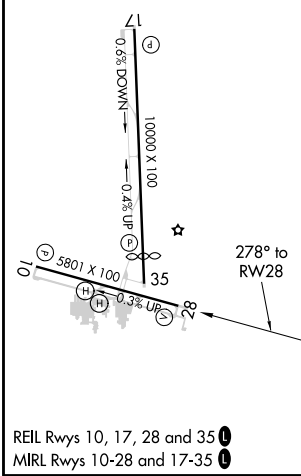
GREELEY-WELD COUNTY (GXY)

RNP APCH.	<p>⚠ Baro-VNAV NA when using Fort Collins/Loveland altimeter setting. For uncompensated Baro-VNAV systems, LNAV/VNAV NA below -24°C or above 54°C. When local altimeter setting not received, use Fort Collins/Loveland altimeter setting: increase LPV DA to 4935 feet and visibility ½ SM, LNAV/VNAV DA to 5061 feet and visibility ½ SM; increase all MDAs 100 feet and visibility Cats C and D ¼ SM.</p>	<p>MISSED APPROACH: Climb to 6300 then climbing left turn to 7000 direct CEDUK and hold.</p>
-----------	---	--

AWOS-3PT 135,175	DENVER APP CON 134.85 251,125	CLNC DEL 126.65	UNICOM 122.8 (CTAF) 0
----------------------------	---	---------------------------	--



ELEV 4697	TDZE 4650
------------------	------------------



CATEGORY	A	B	C	D
LPV DA	4850-¾		200 (200-¾)	
LNAV/VNAV DA	4976-1		326 (300-1)	
LNAV MDA	5080-1	430 (400-1)	5080-1¼	430 (400-1¼)
C CIRCLING	5120-1 423 (500-1)	5200-1 503 (600-1)	5200-1½ 503 (600-1½)	5380-2¼ 683 (700-2¼)

SW-1, 04 NOV 2021 to 02 DEC 2021

SW-1, 04 NOV 2021 to 02 DEC 2021