

# ILS X or LOC X RWY 16R

RENO/TAHOE INTL (RNO)

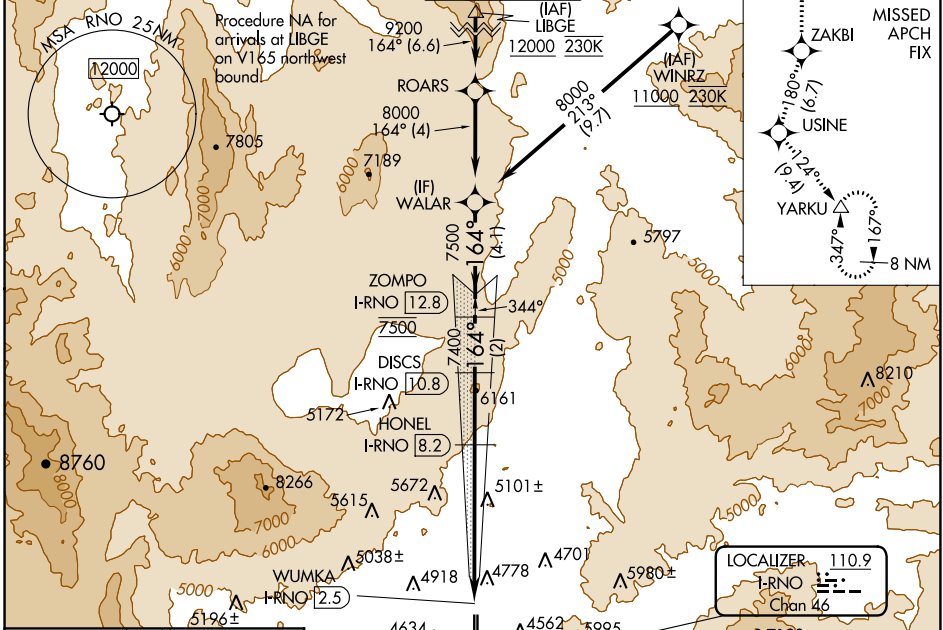
LOC/DME I-RNO <b>110.9</b> Chan <b>46</b>	APP CRS <b>164°</b>	Rwy Idg <b>1001</b> TDZE <b>4415</b> Apt Elev <b>4415</b>
---	------------------------	---

**⚠** DME/DME RNP-0.3 NA. RNAV 1-GPS required.  
DME required. Circling Rwy 7 NA at night.  
# For inop MALS, increase S-ILS 16R all Cats visibility to 2 1/2 mile.  
† RVR 1800 authorized with use of FD or AP or HUD to DA.

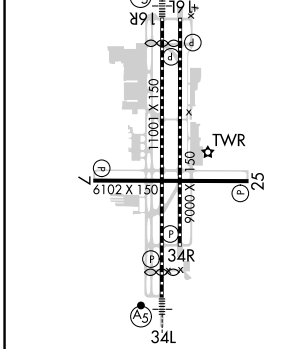
**MALS**

**MISSED APPROACH:** Climb to 13000 on the RNAV missed approach route to YARKU and hold, continue climb-in-hold to 13000.  
† Missed approach requires minimum climb of 390 feet per NM to 8000.

D-ATIS <b>135.8 363.0</b>	NORCAL APP CON <b>119.2 279.55 126.3 353.9</b>	RENO TOWER <b>118.7 257.8</b>	GND CON <b>121.9 348.6</b>	CLNC DEL <b>124.9 370.85</b>	CPDLC
------------------------------	---	----------------------------------	-------------------------------	---------------------------------	-------



ELEV <b>4415</b>	<b>D</b>	TDZE <b>4415</b>
------------------	----------	------------------



13000 ZAKBI	USINE	YARKU	VGSI and ILS glidepath not coincident (VGSI Angle 3.06/TCH 77).	
↑	tr 180°	tr 124°	DISCS	ZOMPO
* LOC only.			HONEL	WALAR
WUMKA	I-RNO [4.7]	I-RNO [8.2]	I-RNO [10.8]	I-RNO [12.8]
7400	6540*	7400	7500	8000
0.6	2.2 NM	3.5 NM	2.6 NM	2 NM
				GS 3.10° TCH 59

CATEGORY	A	B	C	D
S-ILS 16R †		4615/24	200 (200-1/2)	
S-ILS 16R #		5138-1 7/8	723 (800-1 7/8)	
S-LOC 16R	5420/40 1005 (1100-3/4)	5420/55 1005 (1100-1)	5420-2 1/2	1005 (1100-2 1/2)
<b>C</b> CIRCLING	5420-1 1/4 1005 (1100-1 1/4)	5420-1 1/2 1005 (1100-1 1/2)	6480-3	2065 (2100-3)

MIRL Rwy 7-25  
REIL Rwys 7, 16L, 25, and 34R  
HIRL Rwys 16R-34L and 16L-34R

SW-4, 04 NOV 2021 to 02 DEC 2021

SW-4, 04 NOV 2021 to 02 DEC 2021