

LOC/DME I-RNO 110.9 Chan 46	APP CRS 164°	Rwy Idg TDZE 4415 Apt Elev 4415
-------------------------------------------------	------------------------	--------------------------------------------------------

ILS Y RWY 16R

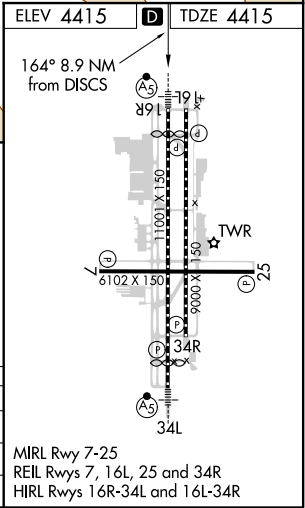
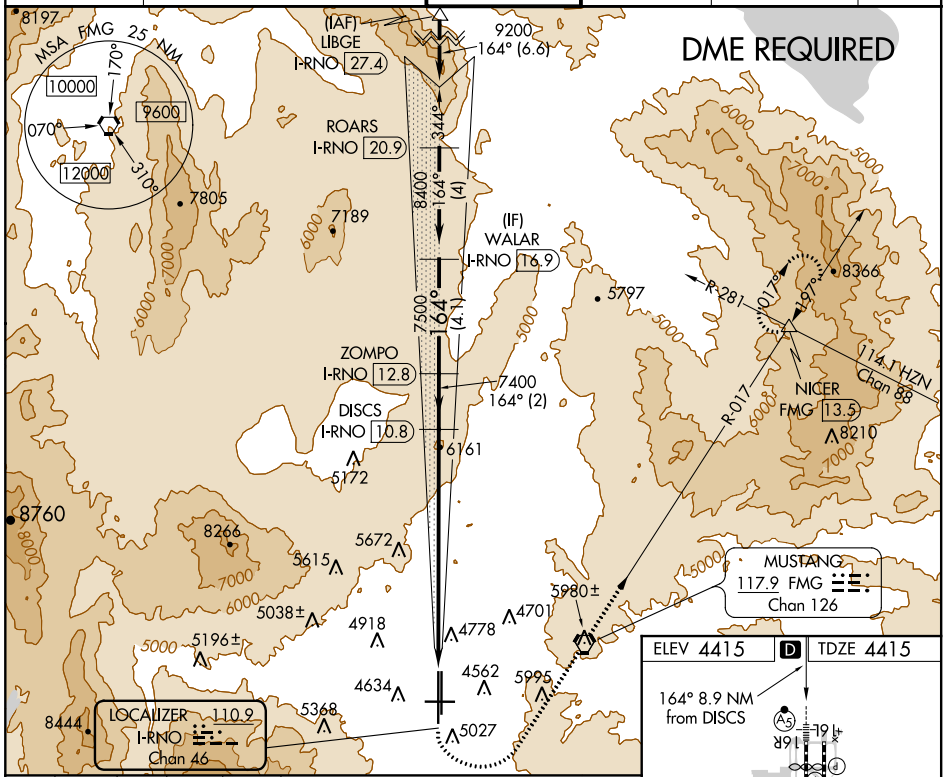
RENO/TAHOE INTL (RNO)

Inop table does not apply.
† For inop MALSR, increase S-ILS R16R all Cats visibility to 1 1/2 mile.

MALSR
AS

MISSED APPROACH: Climb to 6300 then climbing left turn to 11000 direct FMG VORTAC and on FMG VORTAC R-017 to NICER INT/FMG 13.5 DME and Hdg.
* Missed approach requires a minimum climb of 350 feet per NM to 8000.
** Missed approach requires a minimum climb of 275 feet per NM to 8000.

D-ATIS 135.8 363.0	NORCAL APP CON 119.2 279.55 126.3 353.9	RENO TOWER 118.7 257.8	GND CON 121.9 348.6	CLNC DEL 124.9 370.85	CPDLC
------------------------------	---------------------------------------------------	----------------------------------	-------------------------------	---------------------------------	-------



6300	11000	FMG	NICER	ZOMPO	WALAR
↑	↙	R-017	△	I-RNO 12.8	I-RNO 16.9
VGSI and descent angles not coincident (VGSI Angle 3.06/TCH 77).					
		DISCS			
		I-RNO 10.8			
		7400		7500	8400
		↘ 164°		↘ 164°	
		7400			GS 3.10°
		8.9 NM		2 NM	
				4.1 NM	
CATEGORY	A	B	C	D	E
S-ILS 16R *†		4915/60	500 (500-1 1/4)		
S-ILS 16R ***		5415-4	1000 (1000-4)		
S-ILS 16R #		5915-6	1500 (1500-6)		

SW-4, 04 NOV 2021 to 02 DEC 2021

SW-4, 04 NOV 2021 to 02 DEC 2021