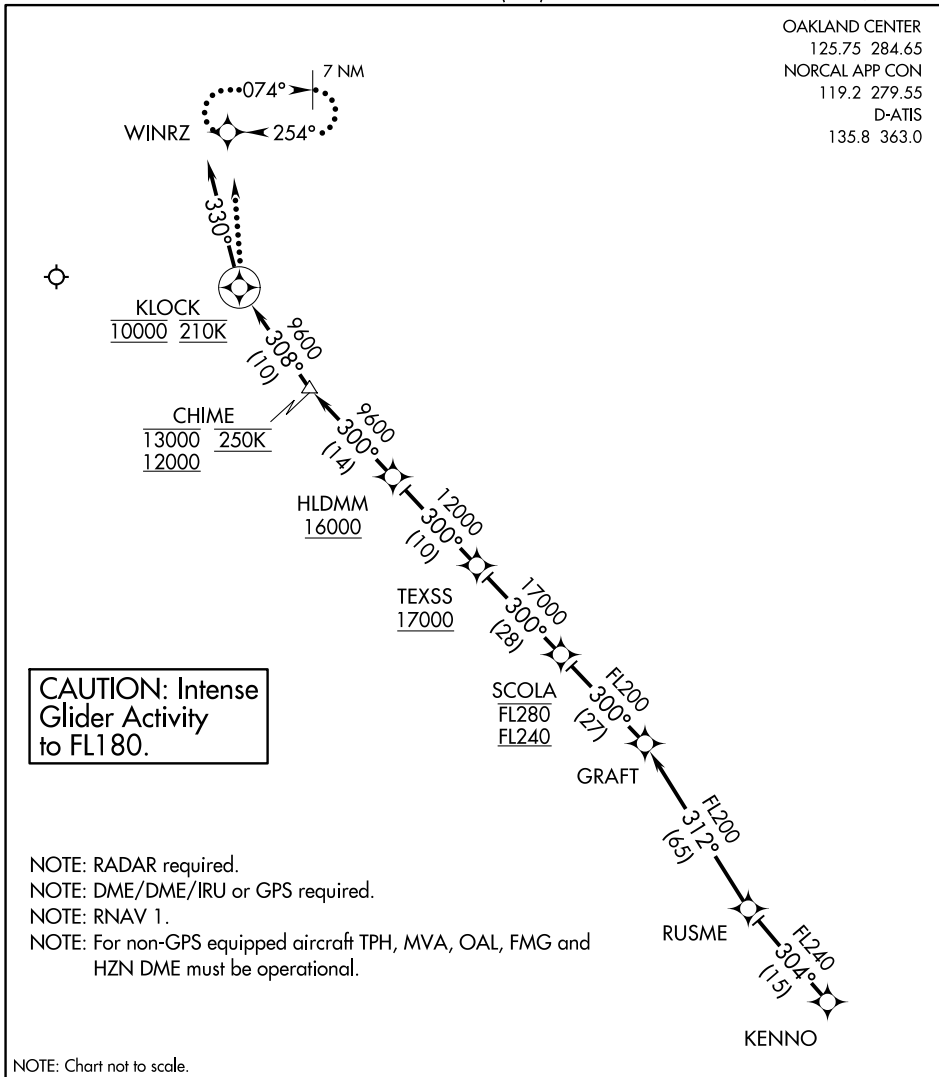


OAKLAND CENTER
 125.75 284.65
 NORCAL APP CON
 119.2 279.55
 D-ATIS
 135.8 363.0



**CAUTION: Intense
 Glider Activity
 to FL180.**

- NOTE: RADAR required.
- NOTE: DME/DME/IRU or GPS required.
- NOTE: RNAV 1.
- NOTE: For non-GPS equipped aircraft TPH, MVA, OAL, FMG and HZN DME must be operational.

NOTE: Chart not to scale.

ARRIVAL ROUTE DESCRIPTION

From KENNO on track 304° to RUSME, then as depicted to cross KLOCK at 10000' at 210K, then on heading 330°. Rwy 16L/16R expect RADAR vectors to final approach course.

LOST COMMUNICATIONS:

At KLOCK, turn right direct to WINRZ and hold, maintain 10000'.

SW-4, 04 NOV 2021 to 02 DEC 2021

SW-4, 04 NOV 2021 to 02 DEC 2021