

(FMG8.FMG) 18088

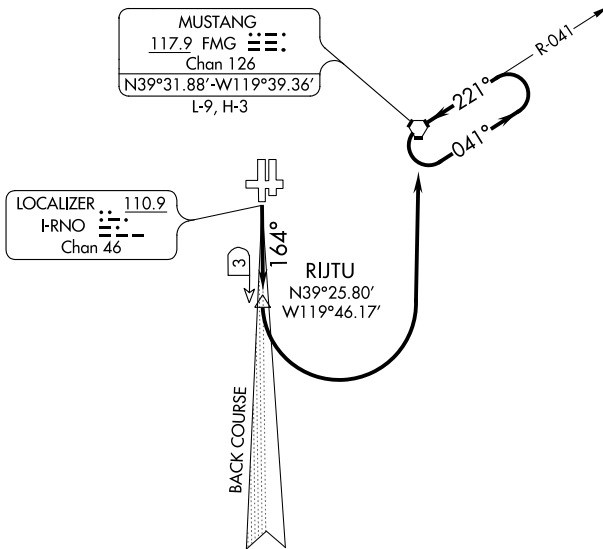
# MUSTANG EIGHT DEPARTURE

AL-346 (FAA)

RENO/TAHOE INTL (RNO)  
RENO, NEVADA

D-ATIS  
135.8 363.0  
CLNC DEL  
124.9 370.85  
CPDLC  
GND CON  
121.9 348.6  
RENO TOWER  
118.7 257.8  
NORCAL DEP CON  
119.2 279.55

**TOP ALTITUDE:  
10000**



### TAKEOFF MINIMUMS

Rwy 7: NA- obstacles

Rwys 25, 34L/34R: NA- ATC.

Rwy 16L: Standard with minimum climb of 740' per NM to 8000 or, 600-1¼ with minimum climb of 525' per NM to 8000.

Rwy 16R: Standard with minimum climb of 740' per NM to 8000 or, 600-1¼ with minimum climb of 525' per NM to 8000.

NOTE: DME required.

NOTE: Chart not to scale.



### DEPARTURE ROUTE DESCRIPTION

TAKEOFF RUNWAYS 16L/R: Climb to 10000 or assigned altitude, via I-RNO south course to RIJTU/3 DME, then left turn direct FMG VORTAC. Climb in FMG holding pattern to depart FMG VORTAC at or above MEA/MCA for direction of flight. Expect clearance to requested altitude five minutes after departure.

# MUSTANG EIGHT DEPARTURE

(FMG8.FMG) 10DEC15

RENO, NEVADA  
RENO/TAHOE INTL (RNO)

SW-4, 04 NOV 2021 to 02 DEC 2021

SW-4, 04 NOV 2021 to 02 DEC 2021